



POWERED BY
ROSIE MARLOW **exp** **UK**

@ rosie.marlow@exp.uk.com

rosiemarlow.exp.uk.com

01225 941 008

Ridge Green Close, Bath, BA2 2EG

£375,000

3 2 1

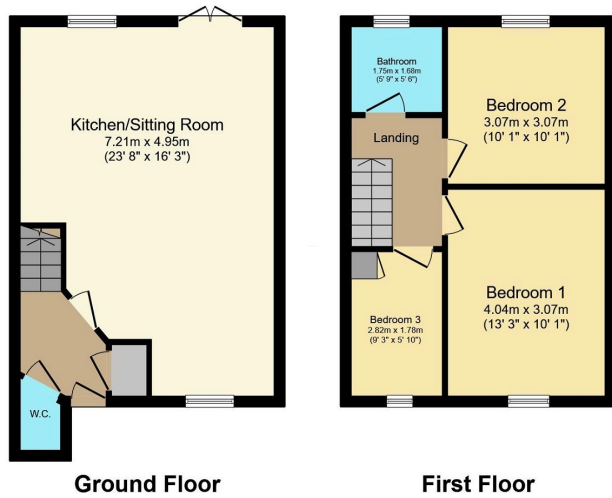


Situated in a quiet cul-de-sac. This lovely home has many benefits including a large corner garden plot, with a home office.

Accommodation includes open plan, sitting room, kitchen/ breakfast room, WC. Upstairs there are three bedrooms and a family bathroom. The property also benefits from two off street parking spaces with EV charging point.

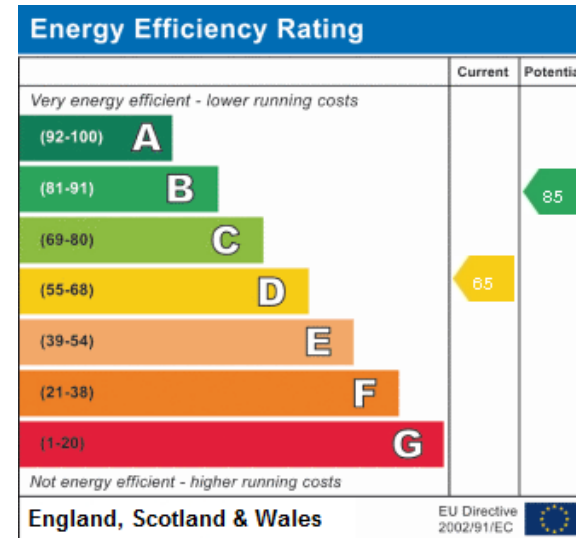
Ridge Green Close is situated in the popular Sulis Meadows development built in the late 1990s on the southern fringes of Bath. The area is well served by local schooling with St Gregorys School, St Martins Primary and Three Ways School within easy reach plus the nearby Sulis Manor road doctors surgery. Within 0.5 mile is a Park & Ride offering easy transport into the city centre with the onward transport links by rail and road beyond. Within a short vehicular distance is a Sainsburys supermarket, chemist, bakery and Post Office.





Total floor area 72.3 sq.m. (778 sq.ft.) approx
 This plan is for illustration purposes only and may not be representative of the property. Plan not to scale. Powered by PropertyBox

- Please Quote Reference RM0334
- Kitchen/ Breakfast Room
- Three Bedrooms
- Bathroom
- Large Garden Plot Additional Garden Was Purchased
- End Terraced House
- Sitting Room
- WC
- Home Office
- Off Street Parking for Two Cars



Address:
 Ridge Green Close