



POWERED BY
ROSIE MARLOW **exp** **UK**

@rosie.marlow@exp.uk.com

rosiemarlow.exp.uk.com

01225 941 008

Coronation Avenue, Bath, BA2 2JS

£375,000

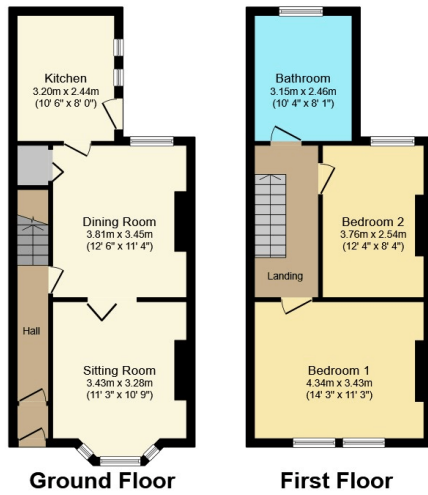
🛏️ 2 🪑 1 🚗 2



A beautiful Victorian terraced house. Accommodation includes sitting room, dining room, kitchen, two double bedrooms, amazing bathroom with walk in shower and Claw foot bath. The house is full of period character and charm. The rear garden has a lovely sunny patio which leads to the lawn. At the foot of the garden you will find a garage which has been split into a music room and workshop.

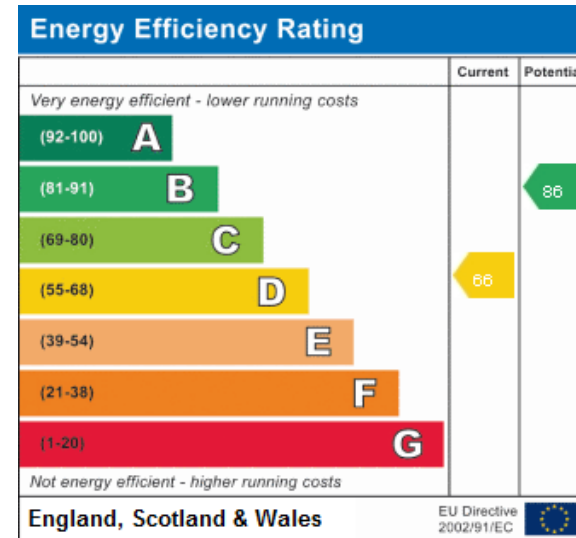
Coronation Avenue is a popular location to the north of Oldfield Park and close to Moorland Road shopping parade with its plethora of shops, including a Sainsburys supermarket. This location offers easy access to the city and with Oldfield Park railway station with its connection to Bristol Temple Meads and Bath Spa station just around the corner. There are local schools nearby including Oldfield Park Junior School, Moorlands Infant School and Beechen Cliff School with the property close to university bus routes for Bath Spa University College and Bath University. A number of doctor's, dental surgeries and veterinary clinics are in the vicinity too.





Total floor area 78.8 sq.m. (848 sq.ft.) approx
 This plan is for illustration purposes only and may not be representative of the property. Plan not to scale. Powered by PropertyBox

- Please Quote Reference RM0334
- Sitting Room
- Kitchen
- Bathroom
- Garden
- Victorian Terraced House
- Dining Room
- Two Double Bedrooms
- Period Features
- Garage



Address:
 Coronation Avenue