



POWERED BY
ROSIE MARLOW exp UK

@rosie.marlow@exp.uk.com

rosiemarlow.exp.uk.com

01225 941 008

Single Hill, Shoscombe, Bath, BA2 8LZ

£325,000

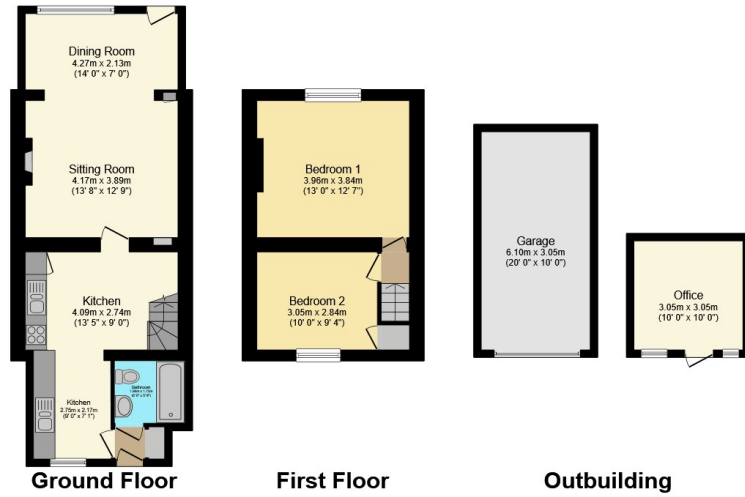
🛏️ 2 🚿 1 🚗 1



A charming character cottage with idyllic views of the surrounding countryside. Accommodation includes sitting room, dining room, kitchen breakfast room, two double bedrooms and a family bathroom. The property has the most glorious gardens to the front and the rear and has a home office tucked away, this dedicated workspace offers a glorious setting for those who work from home.

Shoscombe village is situated approximately 7 miles south of Bath. This attractive area is popular for its rural feel. Amenities in the village include Shoscombe Primary School and the Apple Tree Inn. There is a cycle lane and bridle path nearby, there are also wonderful walks in the immediate vicinity. The sought after village of Wellow also has a primary school, popular public house and village shop whilst Peasedown St John offers more comprehensive amenities.





Total floor area 110.1 sq.m. (1,185 sq.ft.) approx
 This plan is for illustration purposes only and may not be representative of the property. Plan not to scale. Powered by PropertyBox

- Please Quote Reference RM0334
- Sitting Room
- Kitchen/ Breakfast Room
- Bathroom
- Garage
- Terraced Cottage
- Dining Room
- Two Double Bedrooms
- Garden Room
- Garden



Energy Efficiency Rating		
	Current	Potential
Very energy efficient - lower running costs		
(92-100) A		
(81-91) B		
(69-80) C		
(55-68) D		
(39-54) E		
(21-38) F	32	41
(1-20) G		
Not energy efficient - higher running costs		
England, Scotland & Wales		EU Directive 2002/91/EC

Address:
 Single Hill