



AUSTIN SAMUELS POWERED BY exp™ UK




@ austin.samuels@exp.uk.com

🌐 austinsamuels.co.uk

☎ 020 3488 5959

Browne Close, Collier Row RM5

£425,000

 3  1  2



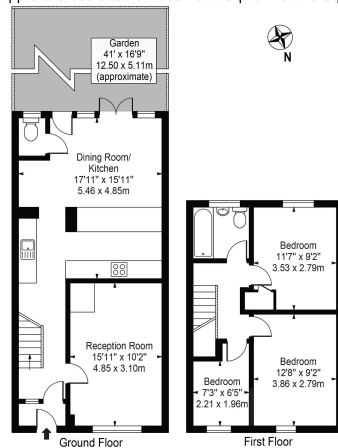
- Three Bedroom House
- Close to Public Transport
- Close to Shops & Amenities
- Close to Various Local Schools
- Beautiful South Facing Garden with Patio
- Double Glazing & Gas Central Heating
- Smart Lighting (Alexa/Google Enabled)
- Tech-USB Sockets/Ceiling Speakers/Mood Lighting
- Guest W/C
- Very Close to Havering Country Park



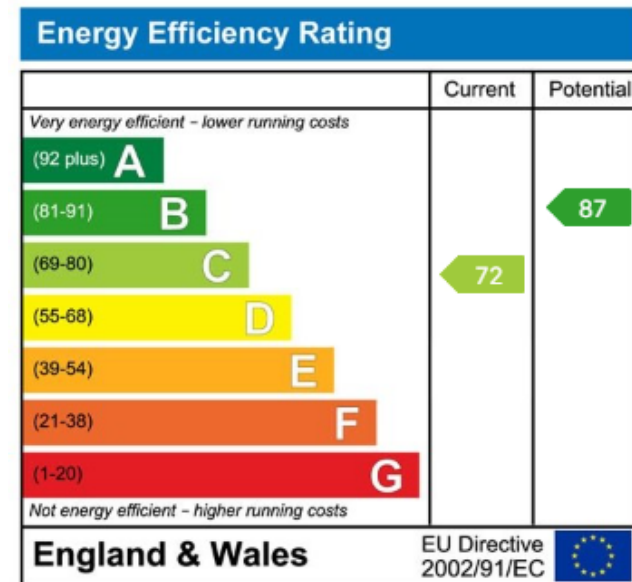
A well-presented three-bedroom, terraced house situated within a short walk to Havering Country Park and local schools. A perfect family home offering open plan living, well-tended south facing garden and within a few miles of public transport- Romford (Rail, Overground & Elizabeth Line) and Hainault (Central Line).



Browne Close,
Collier Row Romford, RM5 2HD
Approx. Gross Internal Area 944 Sq Ft - 87.70 Sq M



For illustration purposes only - Not To Scale
This floor plan should be used as a general guide for guidance only and does not constitute an offer or contract.
Any intending purchaser or lessee should satisfy themselves by inspection, valuation, enquiries and full survey as to the correctness of each statement.
Any errors, measurements or dimensions quoted are approximate and should not be used to value a property or be the basis of any sale or let.



eXp World UK Ltd is a registered company at Level 37, 25 Canada Square, London, E14 5LQ.

Registered company number is 12016573. VAT Registration Number is 327 4120 29