




AUSTIN SAMUELS POWERED BY exp TM UK

@ austin.samuels@exp.uk.com

 austinsamuels.co.uk

 020 3488 5959

Queens Crescent, Kentish Town, London NW5

£340,000

🛏️ 1 🚿 1 🚗 1



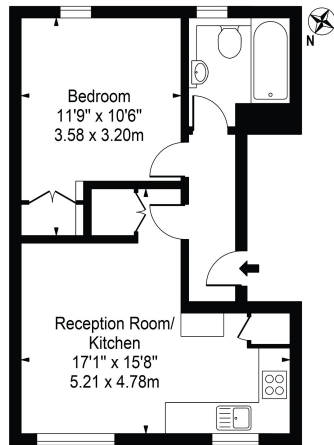
- One Bedroom 2nd Floor Apartment
- Close to Thameslink Rail Station
- Open Plan Reception
- Spacious Double Bedroom
- Close to Green Spaces
- Very Close to Tubes (Northern & Overground)
- Very Close to Shops & Amenities
- Fully Fitted & Integrated Modern Kitchen
- Good Storage
- Close to The Roundhouse Music Venue

A very well presented one-bedroom second floor flat situated within ¾ of a mile to various tube/rail stations (Northern, Overground & Rail lines-zone two), shops, restaurants, and good bus routes.

The property features an open plan reception including integrated kitchen with granite work surfaces, spacious double bedroom with fitted wardrobes, half tiled bathroom with stone worktops and plenty of storage. Located in a central position and within a short walking distance to Belsize Park, Primrose Hill, Camden and Hampstead as well as the local shops, supermarkets and restaurants of Haverstock Hill and the fresh fruit and flower market of Queens Crescent itself with a £1.9m pound revamp planned by Camden council.



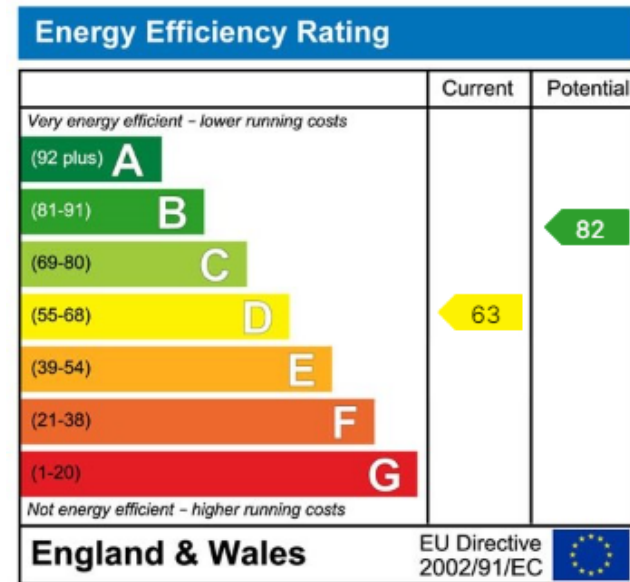
Queens Crescent, NW5 4EG
Approx. Gross Internal Area 414 Sq Ft - 38.46 Sq M



Second Floor

For Illustration Purposes Only - Not To Scale

This floor plan should be used as a general guide for guidance only and does not constitute an offer or contract. Any intending purchaser or lessee should satisfy themselves by inspection, valuation, enquiries and full survey as to the correctness of each statement. Any errors, measurements or dimensions quoted are approximate and should not be used to value a property or be the basis of any sale or let.



eXp World UK Ltd is a registered company at Level 37, 25 Canada Square, London, E14 5LQ.

Registered company number is 12016573. VAT Registration Number is 327 4120 29