



AUSTIN SAMUELS POWERED BY exp™ UK

@ austin.samuels@exp.uk.com

🌐 austinsamuels.co.uk

☎ 020 3488 5959



# Dale View Avenue, North Chingford, London E4

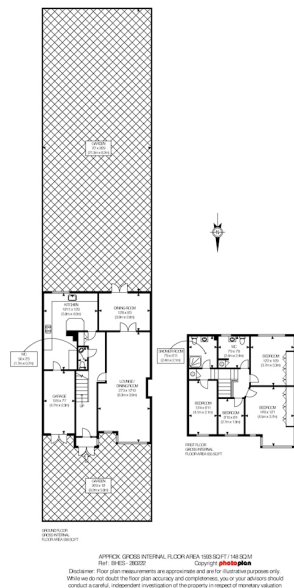
£775,000

🛏️ 4 🚿 2 🚻 2



- Four Bedroom House
- Two Bathrooms & Separate W/C
- Garage + Driveway for 2 Cars
- Close to Chingford Station (Rail & Overground)
- Very Large Garden with Patio (Potential to Extend STP)
- Close to Shops, Cafes & Restaurants
- Close to Schools
- Good Storage
- Ref: AS0090

A beautifully presented four-bedroom, two-bathroom house situated a mile from Chingford Station, Epping Forest, and Station Road. The house offers three double bedrooms, a single bedroom, two immaculate bathrooms, separate ground floor w/ c, a large reception with separate dining room as well as a large kitchen with good storage and breakfast bar. There is also a secure garage and block pave driveway with parking for two cars. Located in a highly sought after and select part of North Chingford the property benefits from easy access to the ever-popular Epping Forest, easily reached with a short walk. Chingford Station (Rail & Overground) is close by giving you direct access to Liverpool Street in approximately 27 minutes. The M11 can be reached easily, and Woodford station is a 10-minute drive away allowing you to have access to the central line.



Score	Energy rating	Current	Potential
92+	A		
81-91	B		
69-80	C		80   c
55-68	D	64   D	
39-54	E		
21-38	F		
1-20	G		