



AUSTIN SAMUELS POWERED BY exp™ UK

@ austin.samuels@exp.uk.com

🌐 austinsamuels.co.uk

☎ 020 3488 5959

The Square, Loughton, Essex, IG10

Offers Over £550,000

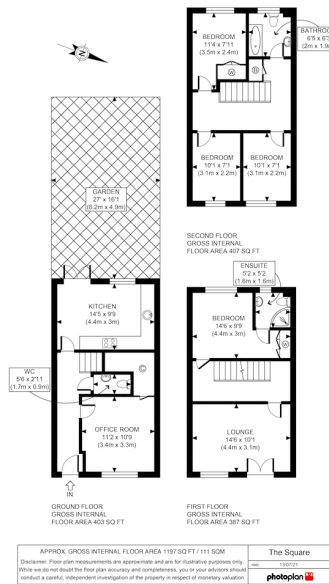
🛏️ 4 🚿 2 🚗 2



- Beautiful Four Bedroom Town House
- Two Bathrooms
- Well Presented Garden
- Visitor Parking Spaces
- Close to Shops, Supermarkets & Green Spaces
- Garage & Allocated Parking Space
- Separate W/C
- Close to Loughton & Debden Tube Stations (Central Line)
- Large Loft Space (scope to extend STPP)
- Ref: AS0090

Guide Price £550,000 - £575,000. An immaculately presented four-bedroom terraced townhouse situated over three floors very close to Loughton and Debden tube stations (Central Line), local shops, parks and amenities.

Offering just under 1200 sq ft of living space the property features a good size kitchen/diner with fully integrated appliances, granite worktops and tiled flooring, two receptions (one with French doors and Juliet balcony), separate w/c, master bedroom with en-suite shower room, three further bedrooms, family size bathroom and good storage. The garden accessed via double French doors in the kitchen is low maintenance and gives access to the secure garage and an allocated off-street parking space.



Score	Energy rating	Current	Potential
92+	A		
81-91	B		89 B
69-80	C	79 C	
55-68	D		
39-54	E		
21-38	F		
1-20	G		

eXp World UK Ltd is a registered company at Level 37, 25 Canada Square, London, E14 5LQ.

Registered company number is 12016573. VAT Registration Number is 327 4120 29