

Clarinet Court, Symphony Close, Edgware, London, HA8

£300,000

2 1 1



LONG LEASE | NO CHAIN | ALLOCATED PARKING. A well-proportioned modern two double bedroom top floor flat situated within a popular Edgware development.

The bright and airy flat comprises an entrance hall with two useful storage cupboards, a spacious lounge with access to a fully fitted kitchen, two double bedrooms (one with a built-in wardrobe) and a modern family bathroom. Features include double glazed windows, wooden flooring, newly decorated and an allocated parking space.

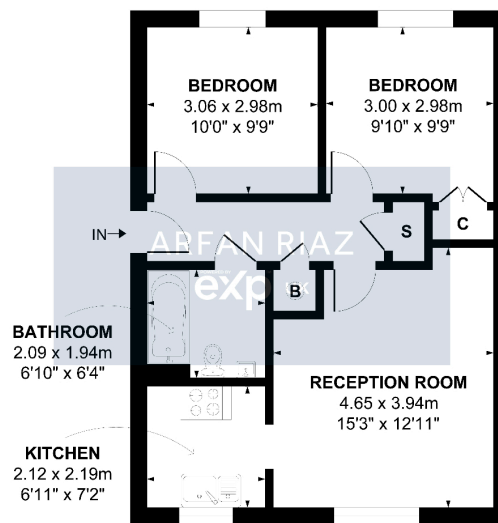
Key Features

- QUOTE REF AR0255
- Newly decorated top floor flat
- Purpose built block
- Close to Edgware Community hospital
- Long Lease
- Two double bedroom flat
- Well proportioned rooms and layout
- Allocated parking space
- No chain
- Great first time home or rental investment

Clarinet Court, Symphony Close, London, HA8

APPROXIMATE GROSS INTERNAL AREA: 53.4 MP ... 575 FT²

THIRD FLOOR



THIRD FLOOR

All attempts have been made to ensure the accuracy of this floor plan.
All measurements of doors, windows, opening directions, room measurements are approximate and no responsibility is taken for any error, omission or misstatement. This plan is for display purposes only and not to scale.
The total floor area is not a guarantee, should be used as an approximation and not be used on the basis of valuation