
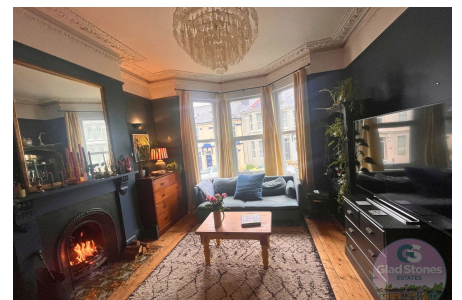


Rosslyn Park Road, Peverell, Plymouth, PL3

Offers Over £320,000

 4  1  2



Picture Perfect, Period Property in Popular Peverell Position:

Glad Stones Estates are delighted to welcome to the market this substantial period house that is bursting with colour and character! Offering spacious living accommodation including lounge, formal dining room and a kitchen/breakfast room along with four bedrooms, family bathroom and separate WC. The property also benefits from a large courtyard garden and an abundance of period features that these beautiful Plymouth properties are famous for.



Key Features

- Beautifully Presented Period Property
- Sought After Location of Peverell
- Lounge, Formal Dining Room, Kitchen / Breakfast Room
- Four Bedrooms
- Period Features Throughout
- Perfect Family Home
- Close to Local Amenities
- Large South Facing Courtyard
- EPC Grade D, Council Tax Band C
- Viewing Highly Recommended

