



8 Northbourne Avenue

Guide Price £220,000

DOMINIC MURPHY POWERED BY exp TM UK

@ dominic.murphy@exp.uk.com

🌐 dominicmurphy.exp.uk.com

☎ 01304 746 016

8 Northbourne Avenue

A well presented bay fronted home, sitting proud in a popular development on the edge of Tower Hamlets in Dover, just 10 minutes from town. The property boasts good living and family space, with new additions such both internal and extensive external decoration. The views from the raised front elevation are fabulous and need to be seen! **Please quote ref DM0223**

Internally - There is a entrance hall with doors leading into the lounge at the front, a further door takes you into the kitchen/dining room, which is a generous size room, a good central family hub or perfect area for entertaining. There is handy downstairs WC and door out to the gardens. Off the dining area is a versatile third bedroom or room that could be a perfect study/hobby room too. Upstairs there is a family bathroom and two double bedrooms. The master is at the front and comes with built in quality wardrobes and fantastic views across Dover.

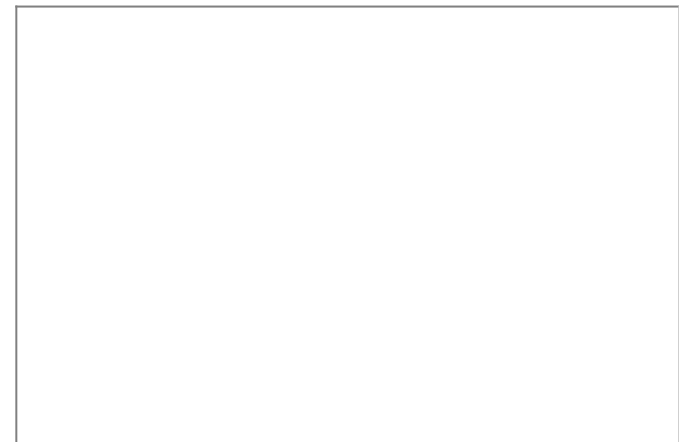
Outside - The rear garden was recently landscaped with attractive brick built terracing. The ground has a large sandstone laid patio area with steps up to another stone patio seating area, which takes on the full advantage of the hilly views. Also comes with a large timber storage shed and rear and side access.

Location - Dover's main commuting roads are the A2 and A20, connecting the town with Canterbury and London. Fast link trains run from Dover Priory to London St Pancras International stations and Ramsgate.

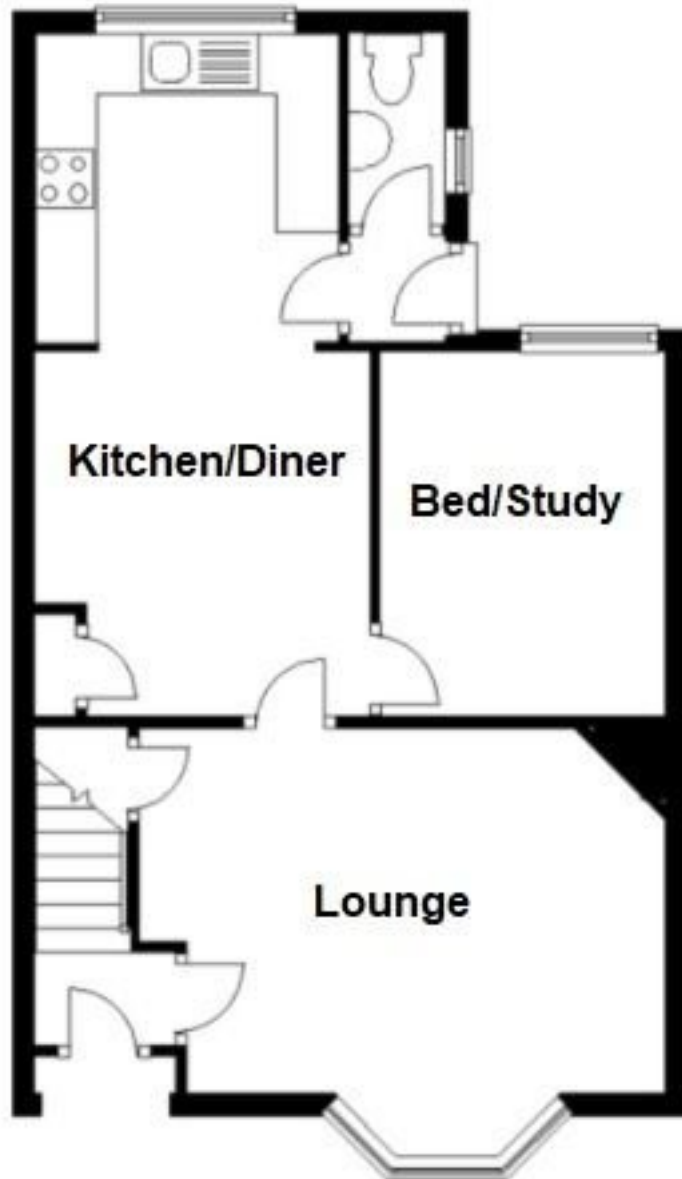




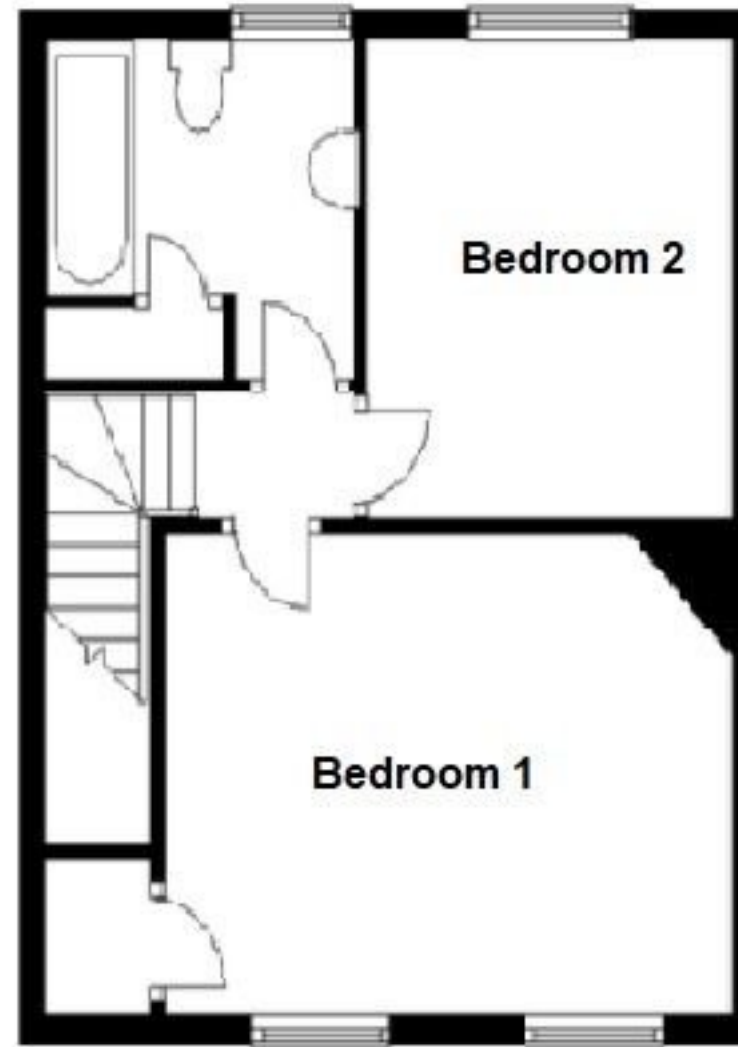




GROUND FLOOR



FIRST FLOOR



eXp World UK Ltd is a registered company at Level 37, 25 Canada Square, London, E14 5LQ.

Registered company number is 12016573. VAT Registration Number is 327 4120 29