



7 Church Lane

£375,000

DOMINIC MURPHY POWERED BY exp TM UK

@ dominic.murphy@exp.uk.com

🌐 dominicmurphy.exp.uk.com

☎ 01304 746 016

7 Church Lane

This attractive modern detached home is situated in Sholden, is about a 15-minute walk into the Deal town centre and looks out over towards the recreation/play park, making it an ideal choice for family living. It has been extended to the rear and is sympathetically designed with light and airy flexible accommodation, arranged over two floors.

Internally - The ideal family home is well proportioned throughout with the ground floor comprising of a porch which flows into the large entrance hall that leads into a generous size lounge. From the lounge is the dining room at the rear that forms part of the extension. The dining room is a great family hub and lends itself perfectly for entertaining. The kitchen is located off the dining room which completes the ground floor.

On the first floor are the three bedrooms and the family bathroom. Two are doubles and benefit from having built in wardrobes and there is a oversized single bedroom. The family bathroom consists of a three-piece suite.

Externally - to the front is ample driveway parking, whilst the rear garden is mostly to lawn with mature shrub borders and a patio seating area, perfect for entertaining.

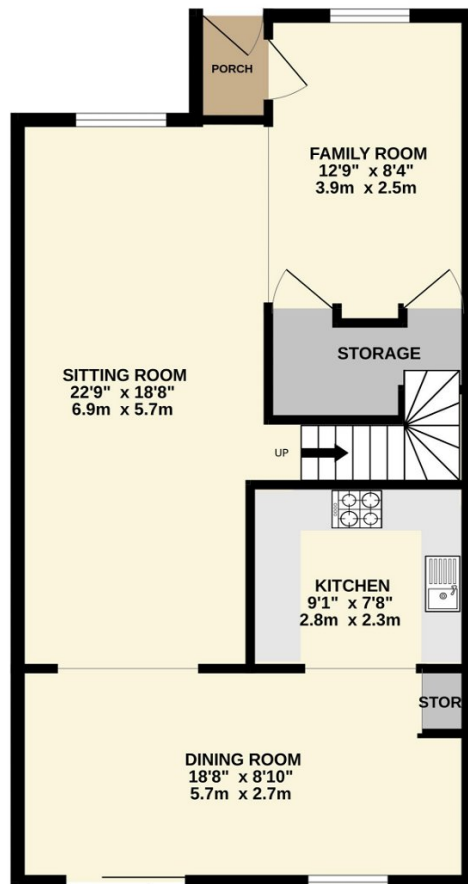




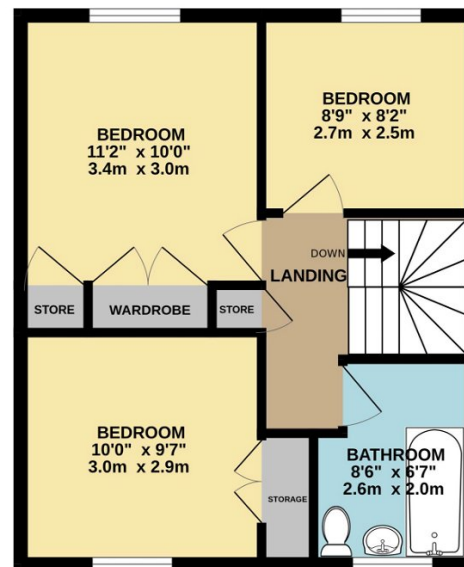




GROUND FLOOR
640 sq.ft. (59.5 sq.m.) approx.



1ST FLOOR
426 sq.ft. (39.5 sq.m.) approx.



THREE BEDROOM DETACHED HOUSE

TOTAL FLOOR AREA : 1066 sq.ft. (99.0 sq.m.) approx.

Whilst every attempt has been made to ensure the accuracy of the floorplan contained here, measurements of doors, windows, rooms and any other items are approximate and no responsibility is taken for any error, omission or mis-statement. This plan is for illustrative purposes only and should be used as such by any prospective purchaser. The services, systems and appliances shown have not been tested and no guarantee as to their operability or efficiency can be given.
Made with Metropix ©2024