



JOHN WHITEHEAD POWERED BY exp TM UK

@ [john.whitehead@exp.uk.com](mailto:john.whitehead@exp.uk.com)

[john.whitehead.exp.uk.com](http://john.whitehead.exp.uk.com)

☎ 07943 237 182

## Stone Row, 7, The Green, Fordcombe

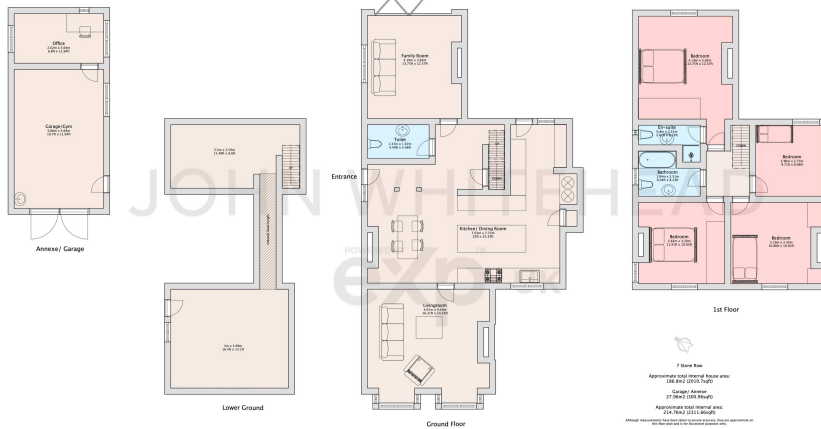
Guide Price £1,100,000

🛏️ 4 🚗 3 🪑 3

- OVERLOOKS THE VILLAGE GREEN
- GRADE II LISTED HOME
- HOME OFFICE AWAY FROM THE MAIN DWELLING
- CELLAR
- EXCELLENT LOCAL AMENITIES & WALKING TRAILS
- STUNNING PERIOD FEATURES
- OFF STREET PARKING
- HOME GYM SPACE
- STUNNING PERIOD FEATURES



A simply stunning Grade II listed four bedroom family home, set in the heart of Fordcombe village, offering spacious accommodation, a detached converted garage/home gym/utility room, office and off-road parking. We encourage viewings to appreciate the setting and internal space on offer. Call us now for more information.



eXp World UK Ltd is a registered company at Corporation Service Company (UK) Limited, 5 Churchill Place, 10th Floor, London, United Kingdom, E14 5HU. Registered company number is 12016573. VAT Registration Number is 327 4120 29