

39 Beckton Court, Waterthorpe

Guide Price £325,000

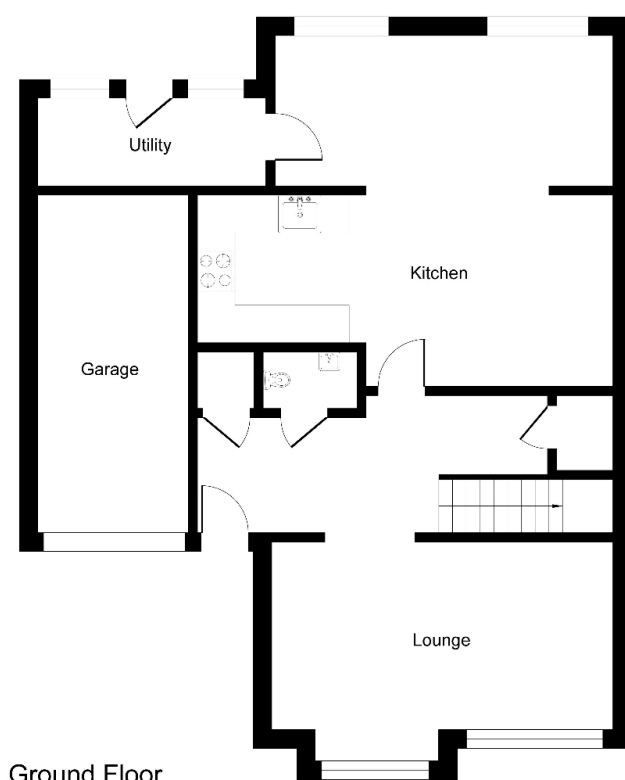
4 3 2



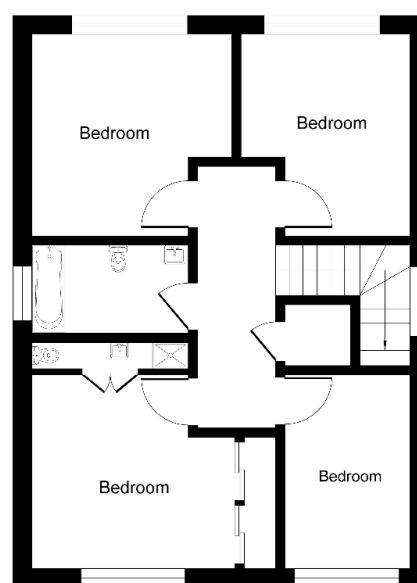
Positioned on a cul-de-sac in the sought after area of Waterthorpe you will find this perfect four bedroom detached family home. Having superb amenities nearby including the Supertram, Crystal Peaks shopping development, local schools and restaurants, this family home is literally ready to move straight into and enjoy. The open plan living space is perfect for entertaining and the garden is recently landscaped, perfect for those BBQ summer nights. Please take a look at the video tour. Please quote ref:LS0082

Key Features

- Four bedroom detached family home
- Stunning landscaped private garden
- Garage & Driveway
- Ground floor wc
- Fabulous open plan kitchen/living/dining space
- Cul-de-sac location
- En-suite shower room to Master Bedroom
- Please quote ref:LS0082
- Please take a look at the video tour
-



Ground Floor



First Floor