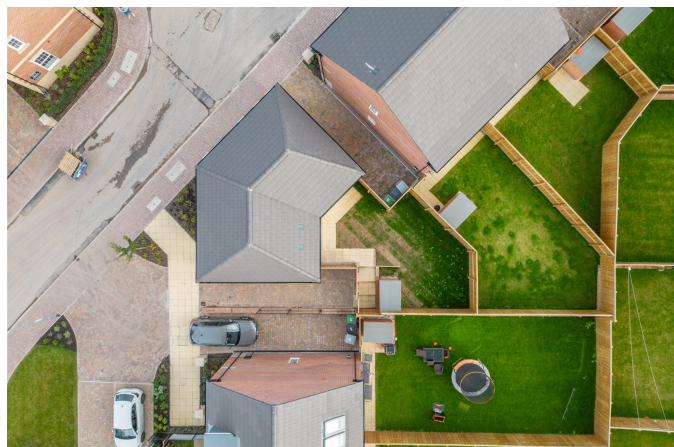


Bourdillon Place, Macclesfield

£1,700PCM (Deposit: £1,961)

🛏 3 🚿 2 🛋 1



Tax Band: Furnished:
Part furnished

- Please Quote Ref JS0322 When Calling
- Brand New Home on The Kings Park Site
- Three Bedroom Detached
- Dual Aspect Reception Room with Patio Doors
- Modern Dual Aspect Dining Kitchen with Patio Doors
- Integrated Appliances
- Downstairs WC
- En-Suite Shower Room to Main Bedroom
- Separate Family Bathroom
- Private Enclose Garden & Tandem Driveway Parking with Electric Charging Point



Whilst every attempt has been made to ensure the accuracy of the floorplan contained here, measurements of doors, windows, rooms and any other items are approximate and no responsibility is taken for any error, omission or mis-statement. This plan is for illustrative purposes only and should be used as such by any prospective purchaser. The services, systems and appliances shown have not been tested and no guarantee as to their operability or efficiency can be given.
Made with Metropix ©2023

****Please Quote Ref JS0322 When Calling****