



HOLLY PRICE ^{POWERED BY} **exp** TM UK

@ holly.price@exp.uk.com

🌐 hollyprice.exp.uk.com

☎ 01904 373131

17, Winteringham House Whitecross Gardens

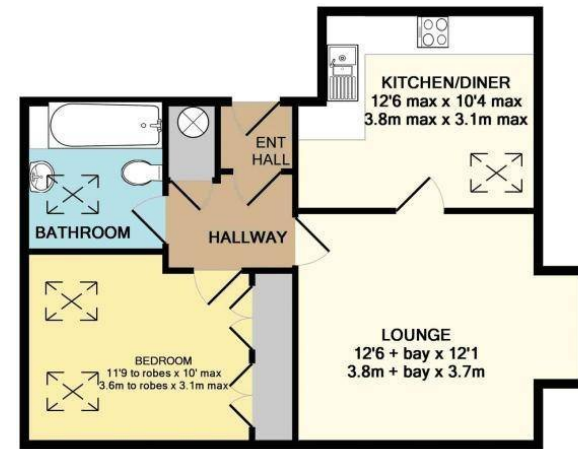
Offers Over £175,000

🛏 1 🚿 1 🚗 1



- Please quote HP0386 when requesting further information or to arrange a viewing
- Beautiful Howdens Kitchen Upgrade
- Kitchen/Diner & Separate Living Area
- Loft Access
- Great Location Within Walking Distance of City Centre
- No Onward Chain
- Spacious Bathroom
- One Double Bedroom
- Allocated Parking Space





TOTAL APPROX. FLOOR AREA 537 SQ.FT. (49.8 SQ.M.)

Whilst every attempt has been made to ensure the accuracy of the floor plan contained here, measurements of doors, windows, rooms and any other items are approximate and no responsibility is taken for any error, omission, or mis-statement. This plan is for illustrative purposes only and should be used as such by any prospective purchaser. The services, systems and appliances shown have not been tested and no guarantee as to their operability or efficiency can be given.
Made with Metropix ©2018

Boasting a fantastic location just off Huntington Road, close to the city centre, this superb one bedroom apartment offers a bright and airy living space, modern kitchen diner and is 'turnkey' ready. Welcome to Winterringham House.

Score	Energy rating	Current	Potential
92+	A		
81-91	B		
69-80	C	71 C	80 C
55-68	D		
39-54	E		
21-38	F		
1-20	G		

eXp World UK Ltd is a registered company at Level 37, 25 Canada Square, London, E14 5LQ.

Registered company number is 12016573. VAT Registration Number is 327 4120 29