



Harlequin House, Joseph Terry Grove

Offers Over £240,000

🛏 1 🚿 1 🚗 1

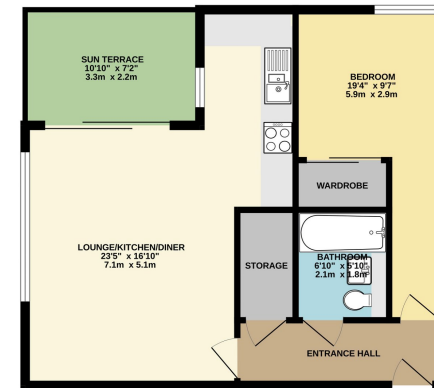


- Beautifully Presented Throughout
- Spacious Lounge/Dining/Kitchen
- Award Winning Chocolate Works Development
- Move Straight In Condition
- One Bedroom Apartment
- Private Outdoor Patio Area
- Underfloor Heating With Engineered Oak Flooring
- Allocated Parking Space & Visitor Parking
- Ideal Bishopthorpe Road Location





GROUND FLOOR
539 sq.ft. (50.1 sq.m.) approx.



TOTAL FLOOR AREA: 539 sq.ft. (50.1 sq.m.) approx.
While every effort has been made to ensure the accuracy of the figures contained here, measurements of actual areas should be taken before any purchase or lease agreement is entered into. The figures are provided for information only and do not constitute a guarantee. The actual area and specifications shown here may vary slightly and the purchaser/tenant should verify the actual area and specifications before any purchase or lease agreement is entered into.

This one bedroom apartment in the prestigious Chocolate Works development is the epitome of modern living within the heart of the historic city of York. A stones throw from all that Bishopthorpe Road has to offer and the Knavesmire & Racecourse, it is a perfect location for any buyer looking for a turn key property with parking. Welcome to Harlequin House.

Score	Energy rating	Current	Potential
92+	A		
81-91	B	83 B	83 B
69-80	C		
55-68	D		
39-54	E		
21-38	F		
1-20	G		

eXp World UK Ltd is a registered company at Level 37, 25 Canada Square, London, E14 5LQ.

Registered company number is 12016573. VAT Registration Number is 327 4120 29