



8 Oxted Place,  
19 Eastlands Way,  
Oxted,  
RH8 0LP

Guide price of £300,000



2



1



1

Robert  
Leech.





# 8 Oxted Place, 19 Eastlands Way, RH8 0LP

A modern two double bedroom apartment built in 2009, centrally located and is within walking distance from Oxted High street and train station. Oxted Place is a gated development and comprises nine apartments with allocated parking spaces for all residents. Internally, the property is spacious throughout and has a good sized living/dining space, a balcony, a fitted kitchen, two double bedrooms and a contemporary bathroom suite. Outside there is also visitor parking bays available. The property has a long lease with approximately 110 years remaining.



0.6 miles  
Oxted

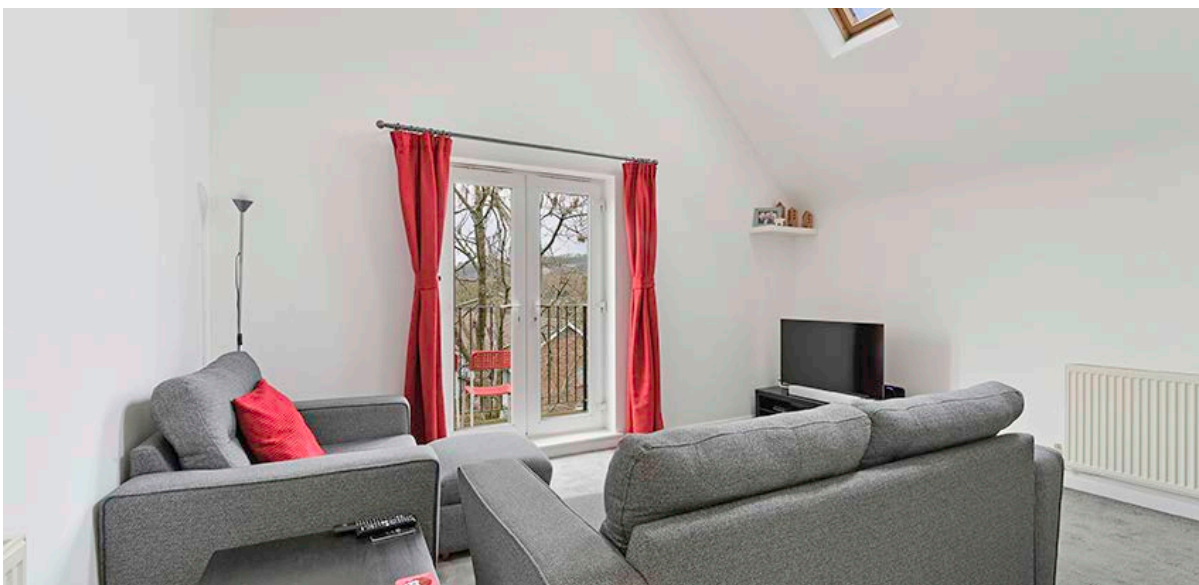


13.7 miles  
Gatwick  
Airport



0.6 miles  
Oxted Mainline  
Station

- Two bedroom top floor apartment
- South west facing balcony
- Allocated parking
- Within easy reach of Oxted high street and mainline station
- Fully fitted modern kitchen
- Long lease
- Service Charges £1,016 per annum
- Ground Rent £250 p/a
- Tandridge District Council



**OXTED**  
72 Station Road East,  
Oxted,  
Surrey RH8 0PG  
01883 717272

**REIGATE**  
1-3 High Street,  
Reigate,  
Surrey RH2 9AA  
01737 246246

**LINGFIELD**  
27 High Street,  
Lingfield,  
Surrey RH7 6AA  
01342 837783

**LONDON**  
121 Park Lane  
London  
W1K 7AG  
0207 0791457

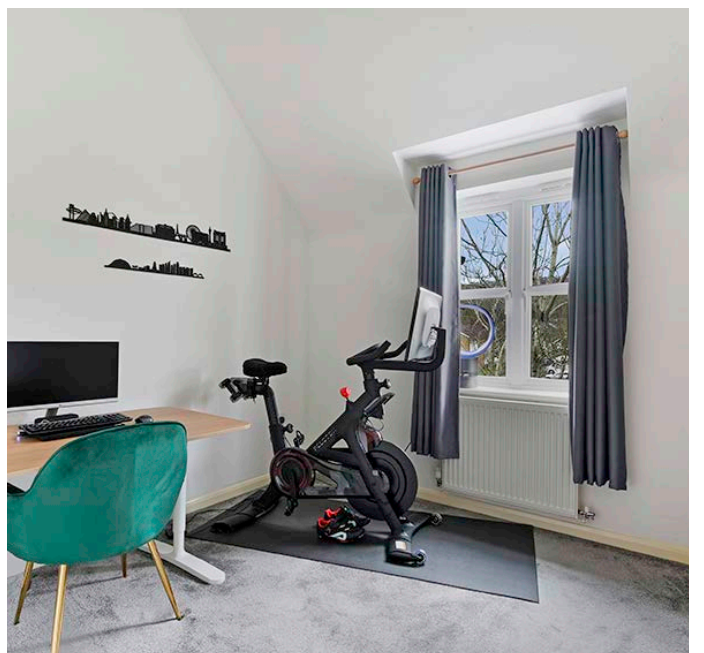
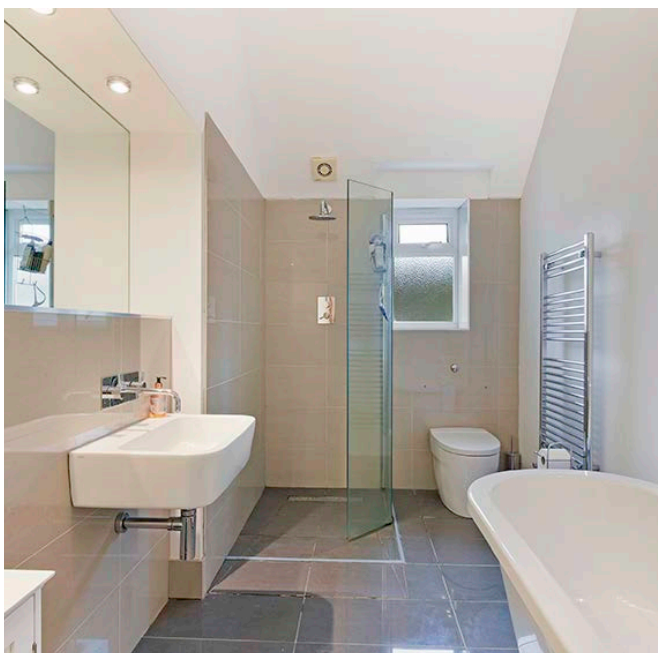




## LOCATION AND TRAVEL

Situated in a sought after road to the north side of Oxted and within a short walk of the centre of town. Oxted offers a mainline station, a Leisure Complex, Cinema and a range of independent shops and restaurants as well as Morrisons and Waitrose supermarkets.

Junction 6 is approximately 3.3 miles away providing easy access to the M25. Oxted mainline railway station is 0.3 miles away, providing fast trains to East Croydon (from 20 minutes), London Bridge (from 37 minutes), London Victoria (from 42 minutes) and London St Pancras International (from 60 mins). Gatwick Airport is 14.7 miles away by car.

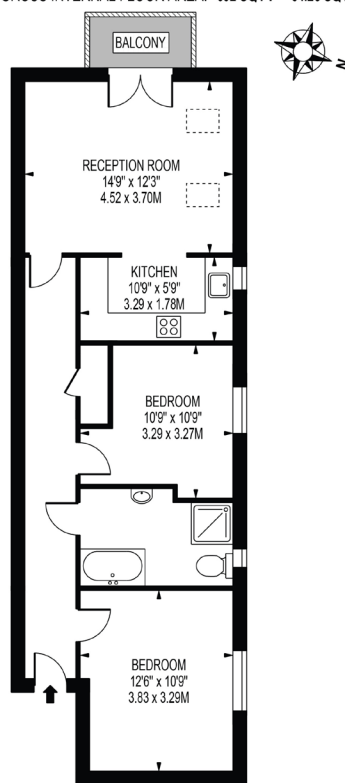






**EASTLANDS WAY,  
OXTED**

APPROXIMATE GROSS INTERNAL FLOOR AREA: 692 SQ FT - 64.25 SQ M



FOR ILLUSTRATION PURPOSES ONLY

THIS FLOOR PLAN SHOULD BE USED AS A GENERAL OUTLINE FOR GUIDANCE ONLY AND DOES NOT CONSTITUTE IN WHOLE OR IN PART AN OFFER OR CONTRACT. ANY INTENDING PURCHASER OR LESSEE SHOULD SATISFY THEMSELVES BY INSPECTION, SEARCHES, ENQUIRIES AND FULL SURVEY AS TO THE CORRECTNESS OF EACH STATEMENT. ANY AREAS, MEASUREMENTS OR DISTANCES QUOTED ARE APPROXIMATE AND SHOULD NOT BE USED TO VALUATE A PROPERTY OR BE THE BASIS OF ANY SALE OR LET.

**DISCLAIMER. PROPERTY MISDESCRIPTIONS.** Whilst every attempt has been made to ensure accuracy of the property details, no responsibility is taken for error, omission or mis-statement. The Agent has not yet tested any apparatus, equipment, fixtures and fittings or services and so cannot verify that they are in working order or fit for the purpose. A buyer is advised to obtain verification from their Solicitor or Surveyor. References to the Tenure of a property are based on information supplied by the Seller. The agent has not had sight of the title documents.