

Etchingam Court, N3

Guide Price £450,000

🛏️ 2 🚿 1 🚽 1



Guide Price £450,000 to £500,000

LB Residential are pleased to offer this lovely 2 double bedroom and 1 bathroom, first floor flat in this secure, 1930's mansion block. All the rooms are a very comfortable size occupying over 700 sq.ft . The flat has double glazing throughout and a separate storage area for those bulky items one doesn't need in the flat.

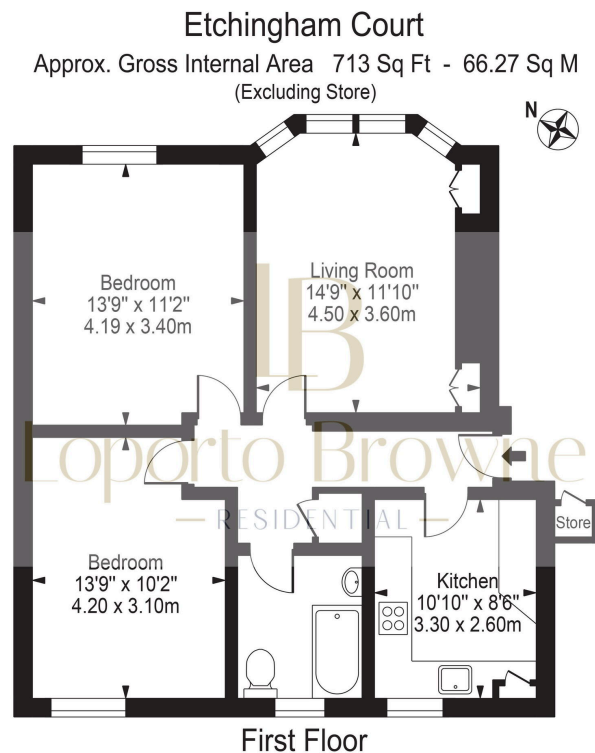
There is a separate kitchen that is ergonomically designed for any good chef and perfect for entertaining small crowds. a separate bathroom with bath is well sized.

The separate living area has a gorgeous bay window overlooking the communal gardens and there is enough room for a dining area too.

The flat comes with access to communal gardens and an allocated parking spot.

Key Features

- Guide Price £450,000 to £500,000
- Allocated parking
- 2 double bedrooms
- Seperate kitchen
- Safe location and near green open spaces
- Secure low rise mansion block
- Communal garden
- Additional storage cupboard
- Wooden floors and carpets in bedroom
- Oli and Liana are delighted to be instructed on this wonderful flat



For Illustration Purposes Only - Not To Scale

This floor plan should be used as a general outline for guidance only and does not constitute in whole or in part an offer or contract. Any intending purchaser or lessee should satisfy themselves by inspection, searches, enquiries and full survey as to the correctness of each statement. Any areas, measurements or distances quoted are approximate and should not be used to value a property or be the basis of any sale or let.