



LB

Loporto Browne

— RESIDENTIAL —



# Westfield Lodge, NW3

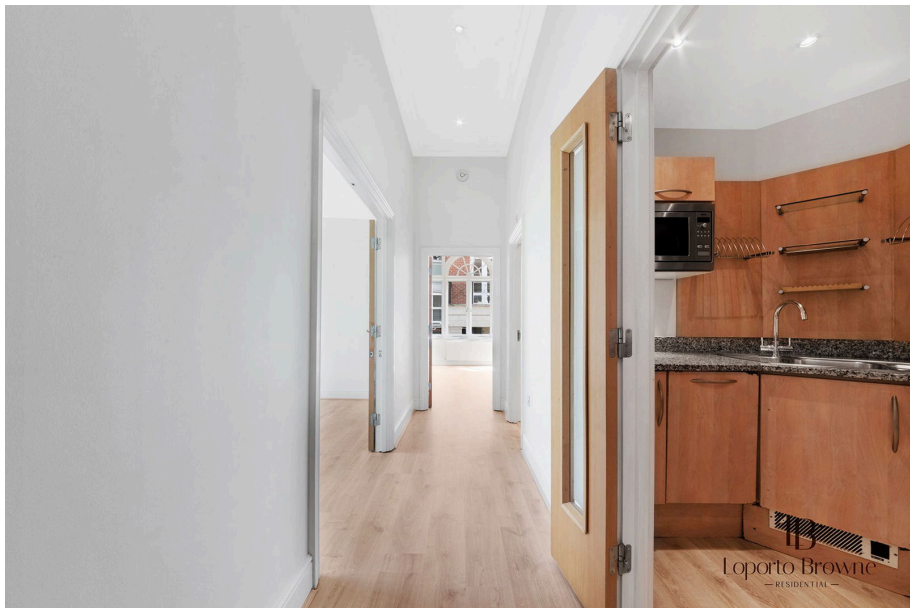
Guide Price £650,000

🛏️ 2 🚿 1 🚗 1



- Guide Price: £650,000 to £700,000
- Gymnasium & Indoor Swimming Pool
- 3.5 Meter Ceilings
- Secure Prestigious Block
- Excellent Transport Links
- Secure Underground Parking & 24 Hour Concierge
- Landscaped Communal Garden
- Wooden floors
- Long Lease (Virtual Freehold)
- EPC Rating C



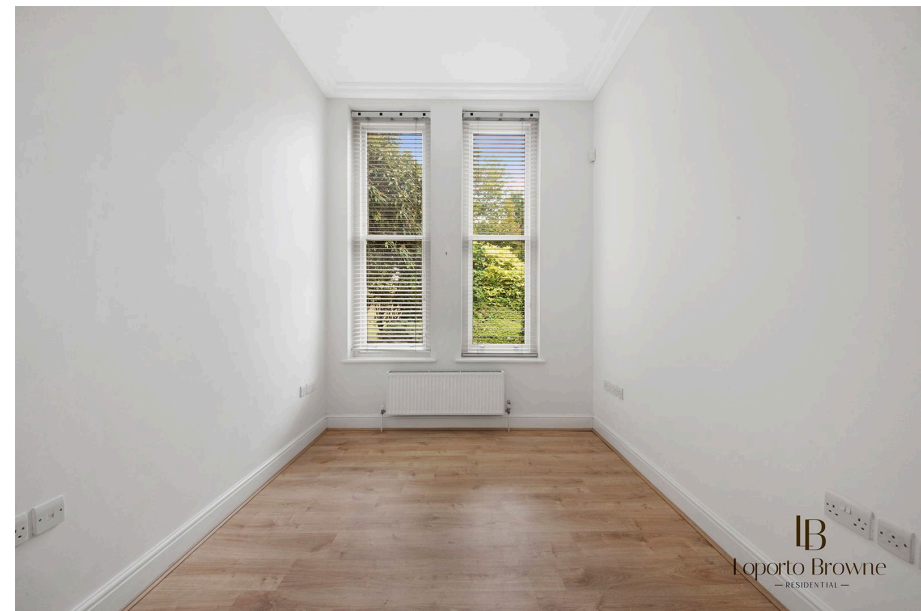


**Guide Price: £650,000 to £700,000**

Westfield Lodge is a stunning building set between Kidderpore Avenue and Finchley Road, NW3. This wonderful apartment is situated on the raised ground floor of this secure period building. It consists of two double bedrooms, one with a gorgeous bay window, a separate kitchen and separate bathroom. The flat also benefits from 3.5-meter ceilings and wooden floors throughout the living areas.

The large living space leads through French doors onto a beautifully manicured communal garden however the patch feels very private.

There are leisure facilities, a swimming pool, portorage and secure underground parking.



LB  
Loporto Browne  
RESIDENTIAL

Oli & Liana are c is fantastic flat.

