



LB

Loporto Browne

— RESIDENTIAL —

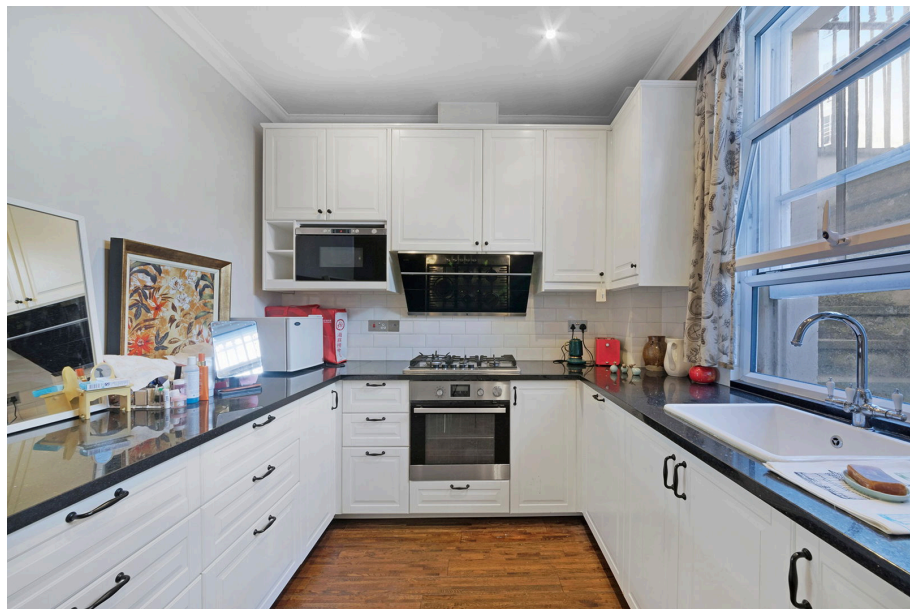
# Warwick Way, SW1V

£2,350,000

🛏 5 🚿 4 🚗 2



- Freehold terraced house in the heart of central London
- South facing patio/garden with sun room
- Floor to ceiling windows
- Conveniently located close to Victoria station
- Westminster Council
- 5 bedroom and 4 bathrooms arranged over 5 floors
- Huge principal en-suite bedroom
- High ceilings
- Abundance of storage
- Vibrant living environment, surrounded by prestigious schools



Spanning five floors, the property features a spacious double reception on the raised ground floor, a Smallbone kitchen, family room, and a delightful sunroom leading to a south-facing patio on the lower ground floor. The master suite, complete with a dressing area and en-suite bathroom, occupies the entire first floor and has floor to ceiling windows leading into a balcony, while three additional double bedrooms and a family bathroom grace the upper floors.

