



LB

Loporto Browne

— RESIDENTIAL —

Jade Apartments, New Malden, KT3

£405,000

🛏️ 1 🚿 1 🚗 1

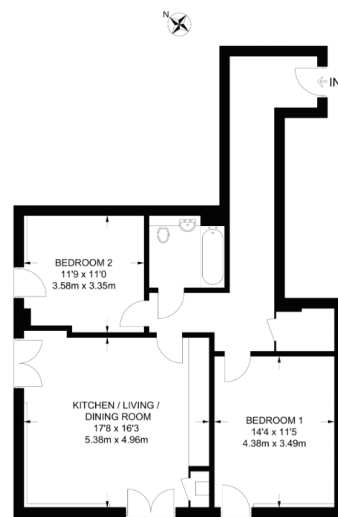


- Contemporary Italian kitchen with fitted Bosch appliances
- Stylish designer bathroom
- Swiss Krono, Moon flooring to living room, bathrooms and hallway
- Luxurious carpet to all bedrooms
- Underfloor heating throughout
- Lift access
- BT Fibre
- 10 year Buildzone warranty
- Vaillant Ecotec Pro combination boiler
- Private balcony to many of the apartments (please check floor plan)



Indulge in an oasis of modern living, astonishing contemporary new homes nestled on New Malden high street, surrounded by the lush tranquillity of Beverley Brook and Hogsmill River. Here you can experience both worlds of serene green areas and a vibrant urban hub.

Oliver and Liana at LB Residential are proud to be appointed on this exclusive development in New Malden, KT3. To book your viewing slot on the open day please contact us directly. Spaces are limited, so book your place promptly to avoid disappointment.



FIRST FLOOR
APPROXIMATE GROSS INTERNAL AREA
821 SQ FT / 76.3 SQ M
This plan has been drawn for illustrative and identification purposes only.

