



LB

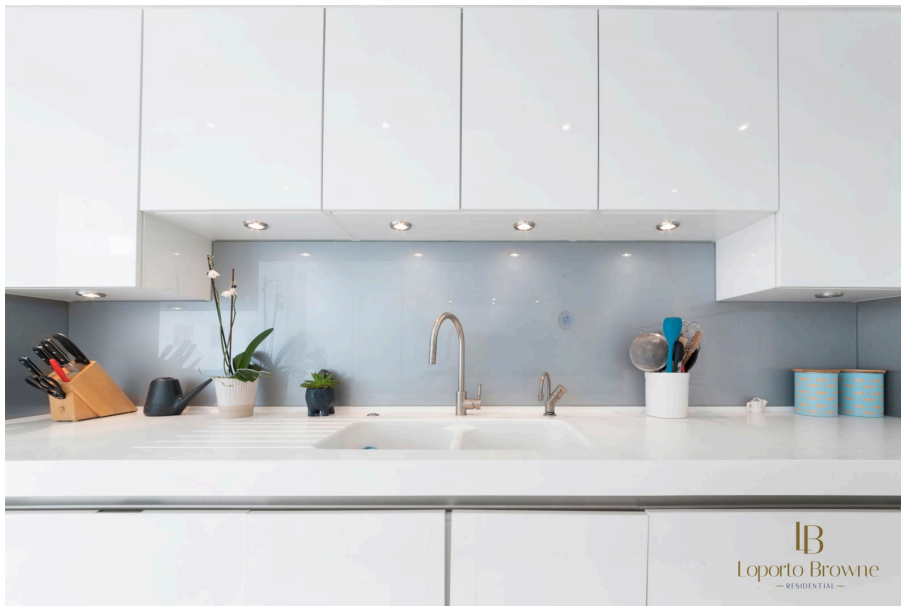
Loporto Browne

— RESIDENTIAL —

# Goldhurst Terrace, South Hampstead, NW6

Offers Over £3,500,000

🛏️ 6 🚿 3 🚗 2

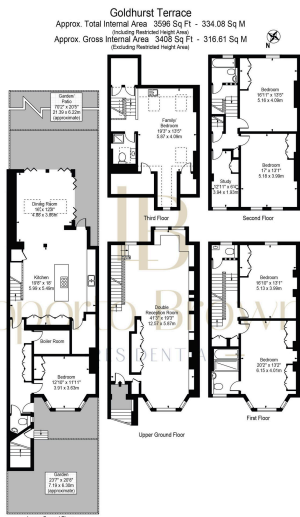


- Gorgeous colourful family home on a beautiful tree lined street in South Hampstead
- Arranged over 5 floors
- Six bedroom and three bathrooms
- South facing garden
- Expansive kitchen and dining room with Gaggenau appliances
- Off street parking for two vehicles
- Raised ground floor entrance
- Separate utility room
- High ceilings throughout
- Bright and airy



Introducing this exquisite South Hampstead family home. With a sunny south-facing garden, this spacious property is spread across 5 floors and boasts an expansive kitchen and dining room equipped with high-end Gaggenau appliances. You'll enjoy the convenience of off-street parking for two vehicles and a raised ground floor entrance leading onto a double reception room creating a grand entrance.

The property is a rare find in the heart of South Hampstead, offering nearly 3,600 sq ft of internal space, making it an ideal family home. The living and entertaining areas are generously proportioned, and the 70-foot lawned garden provides a serene outdoor escape. This substantial red brick terraced freehold house is flooded with natural light and offers incredible roomy living spaces. Don't miss the opportunity to make this your dream family home!

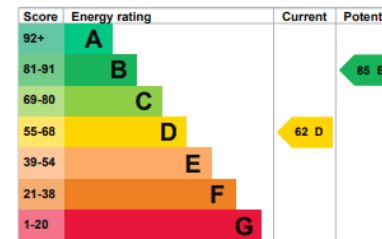


For Illustration Purposes Only - Not To Scale  
 This floor plan should be used as a general guide for guidance only and does not constitute an offer or contract. Any intended purchase or lease should satisfy themselves by inspection, valuations, enquiries and full survey as to the correctness of each statement. Any errors, measurements or dimensions quoted are approximate and should not be used to value a property or be the basis of any sale or let.

### Energy rating and score

This property's current energy rating is D. It has the potential to be B.

[See how to improve this property's energy efficiency.](#)



The graph shows this property's current and potential energy rating.

Properties get a rating from A (best) to G (worst) and a score. The better the rating and score, the lower your energy bills are likely to be.

For properties in England and Wales:

the average energy rating is D  
 the average energy score is 60