



LB

Loporto Browne

— RESIDENTIAL —

Barrowell Green, London, N21 3AS

£1,950PCM (Deposit: £2,250)

🛏️ 3 🚿 1 🪑 2



- Please quote property ref LL0089
- Close to Winchmore Hill and Palmers Green Stations
- Lovely back garden
- Recently renovated
- Modern kitchen
- Separate dining area
- Large family bathroom
- Original fireplace
- Period charm and style
- 3 bedroom family home

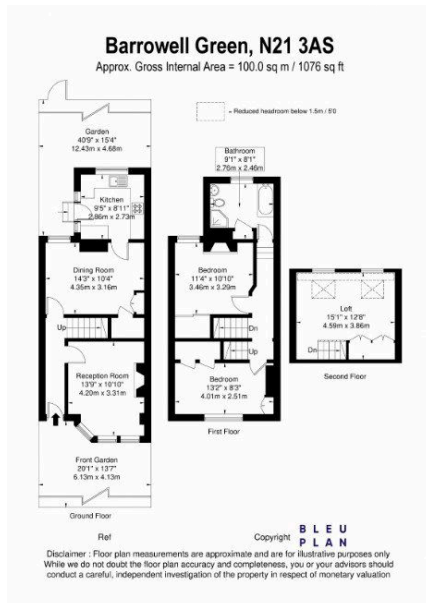
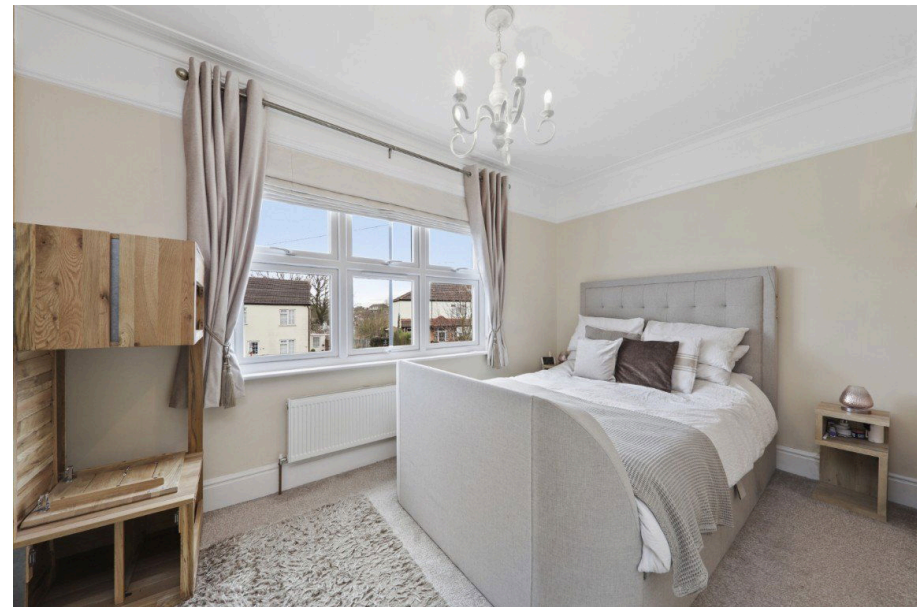
Tax Band: Furnished: Not specified

A 3 bedroom family home which oozes period charm and style. Located a short stroll away from lots of green open spaces with Firs Farm Wetlands Park and Playing Fields and tennis courts at the end of the road.

Recently renovated this family home enjoys a sunny reception room with original fireplace, separate dining area ideal for entertaining, modern kitchen which leads onto a lovely back garden with BBQ area.

Upstairs one finds 3 double bedrooms and a large family bathroom.

Please quote Property ref LL0089



Energy performance certificate (EPC) - Find an energy certificate - GOV.UK <https://find-energy-certificates.digital.communities.gov.uk/energy-certificates>

Energy performance certificate (EPC)

63 Barrowell Green LONDON N21 3AS	Energy rating D
Valid until 19 April 2031	Certificate number 9959-5524-6000-0380-0225

Property type	Mid-terrace house
Total floor area	100 square metres

Rules on letting this property

Properties can be rented if they have an energy rating from A to E.

If the property is rated F or G, it cannot be let, unless an exemption has been registered. You can read [guidance for landlords on the regulations and exemptions](https://www.gov.uk/government/consultations/energy-ratings-for-rental-properties) (<https://www.gov.uk/government/consultations/energy-ratings-for-rental-properties>).

Energy efficiency rating for this property

This property's current energy rating is D. It has the potential to be C.

[See how to improve this property's energy performance.](#)