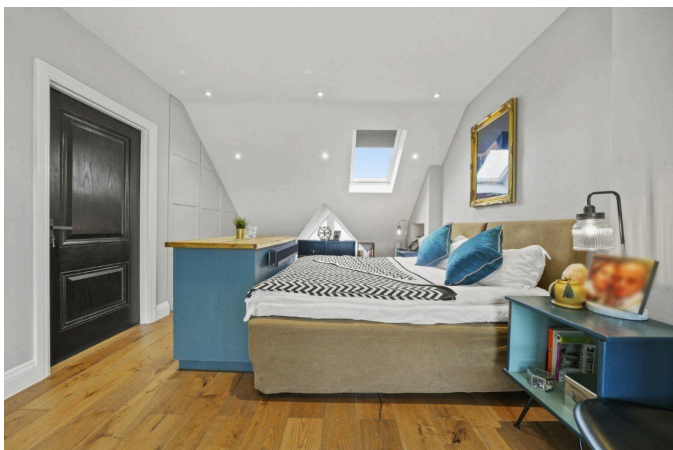


## Gladstone Park Gardens, NW2

£6,500PCM (Deposit: £7,500)

🛏 5 🍴 4 🚗 2



Tax Band: Furnished:  
Not specified

- Available September 2024
- Heatmiser underfloor heating throughout in zones
- The main bedroom enjoys extensive views over the London skyline including the BT Tower and Shard
- Beautiful private south-facing garden
- All the windows are triple glazed
- A truly 'smart' home, everything can be controlled remotely
- High spec German kitchen
- Beautiful private south-facing garden
- Family home with 5 double bedrooms, 4 bathrooms, 2 of which are en-suite

### Gladstone Park Gardens, NW2 6JX

Approx. Gross Internal Area = 226.3 sq m / 2436 sq ft  
 Shed = 9.4 sq m / 101 sq ft  
 Total = 235.7 sq m / 2537 sq ft



The Floor plan is not to scale and measurements and areas shown are approximate and therefore should be used for illustrative purposes only. The plan has been prepared in accordance with the RICS code of Measuring Practice and whilst we have confidence in the information produced it must not be relied on. If there is any aspect of particular importance, you should carry out or commission your own inspection of the property.  
 Copyright © BLEUPLAN

A 5 bedroom grand family residence fully renovated to an exquisite standard with a beautiful private south-facing garden. A short stroll away from the wonderful Gladstone Park in the up and coming Dollis Hill and also the incredible Brent Cross Regeneration Area.