



*Toby Gullick*  
INDEPENDENT PROPERTY SPECIALIST

# The Drove, Twyford , Winchester

£685,000

🛏️ 4 🚿 1 🚗 2



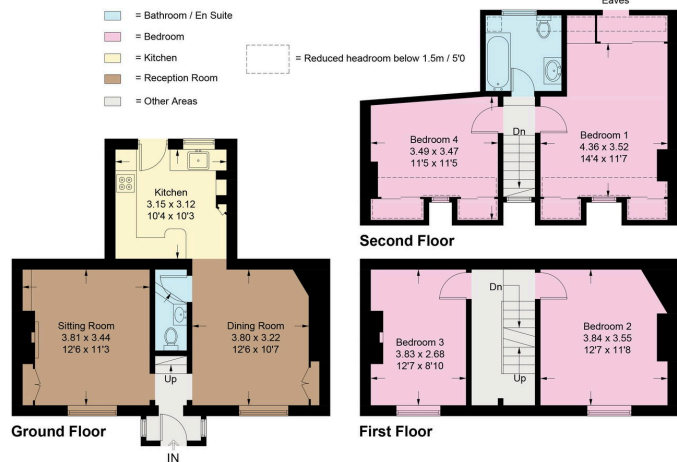
Attractive and Appealing, Cedar Cottage is a lovely quintessential English village home with beautifully presented accommodation arranged over three floors, ideal for anyone who desires comfort, style and period charm. Nestled in the heart of the highly sought-after village of Twyford. This desirable home welcomes you into a lovely light entrance hall with original wooden flooring that continues into the attractive well proportioned formal dining room, perfect for entertaining and modern day living. Adjacent is an alluring sitting room, with a wonderful focal point being the original, elegant period fireplace that is highlighted by the feature wall that adds a rich splash of colour. At the rear of the property is a bright, well-appointed kitchen with high ceilings that create a sense of space with a light and airy feel. The kitchen benefits from traditional cream Shaker-style cabinets with wooden worktops, a breakfast bar, Belfast sink and a door out to the secluded rear courtyard. A cloakroom, with toilet and Burlington sink, completes the ground floor accommodation. The period features, far-reaching views and superb amount of natural light continues upstairs, with the first floor comprising two splendid double bedrooms, one featuring a picture perfect fireplace, both overlooking the front aspect of the property. The second floor is superbly lit by a duo of dormer windows offering views of the surrounding landscape, both bedrooms on the second floor have a wealth of storage with tasteful fitted wardrobes and cleverly designed eaves with cupboards and draws, while the colour scheme adds to the aesthetics of the rooms. . An elegant family bathroom has a full size bath with overhead shower, as well as a marble topped cabinet with under-mounted basin and captivating views of Twyford village.

**OUTSIDE :** Set back from the road, a shared private driveway leads to off road parking for two cars. The generously sized garden is separate to the house and bordered by attractively planted beds of mature shrubs and flowers which the owners delightfully refer to as 'the secret garden'. The established, manicured garden is ideal for those with green fingers and benefit's from a useful storage shed while the large paved patio is ideal for entertaining and alfresco dining. A pretty secluded patio situated at the front of the house provides a sunny seating area, and there is also a additional small private courtyard to the rear of the property .



### Cedar Cottage, 5 The Drive, Twyford

Approximate Gross Internal Area = 115.7 sq m / 1245 sq ft



This plan is for layout guidance only. Not drawn to scale unless stated. Windows and door openings are approximate. Whilst every care is taken in the preparation of this plan, please check all dimensions, shapes and compass bearings before making any decisions reliant upon them. (ID1123229)



- An Appealing Quintessential English Cottage
- Two Reception Rooms
- Exudes Period Charm And Features
- Within Walking Distance To Village Amenities
- Sought After Village Location
- Four Double Bedrooms
- A Beautiful And Elegant Bathroom
- An attractive And Spacious 'Secret Garden'
- No Forward Chain
- Off Road Parking For Two Cars

