



Birchfield Road
REDDITCH

£125,000



Second Floor One Bedroom Apartment

Features.

- SECOND FLOOR APARTMENT
- ONE BEDROOM
- BATHROOM
- OPEN PLAN KITCHEN/LIVING AREA
- SECURE ENTRANCE
- COMMUNAL GARDENS
- ALLOCATED PARKING
- POPULAR LOCATION

Description.

Summary: A wonderfully presented one bedroom second floor apartment with allocated parking and situated in the popular district of Webheath, Redditch.

Description: This apartment has been beautifully styled and presented throughout. The accommodation briefly comprises:- A secure entrance, hall way with built in storage, an open plan kitchen/living area with a range of fitted units and integrated oven and hob, the lounge also benefits from dual aspect windows. Completing the apartment is a modern bathroom with bath and shower over, sink and WC and a spacious master bedroom.

Outside: The apartment complex is situated within neatly maintained grounds and benefitting from allocated parking and communal gardens.

Location: The town of Redditch offers easy access to motorway links (M42, Jct 2&3) and there are good rail and bus links. There are also excellent leisure facilities along with cultural attractions, including the Kingfisher Shopping Centre.



Room Dimensions:

Hall

Lounge: 12' 11" x 12' 5" (3.95m x 3.80m)

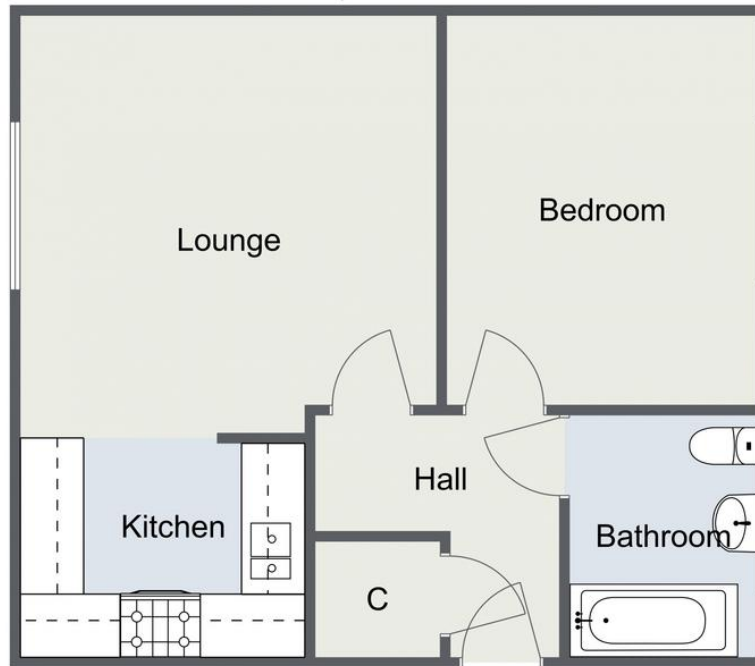
Kitchen: 8' 10" x 6' 8" (2.70m x 2.05m)

Bathroom: 7' 6" x 5' 10" (2.30m x 1.78m)

Bedroom: 12' 1" x 9' 8" (3.70m x 2.95m)



Birchfield Road, Redditch
Apartment



Total Area Approx:
42.7 sq metres (460 sq ft)

For illustrative purposes only. Decorative finishes, fixtures & fittings do not represent the current state of the property. Measurements are approximate & not to scale.
Floor Plans made using RoomSketcher.

EPC: C

COUNCIL TAX BAND: A

TENURE: Leasehold

For more information on this house or to arrange a viewing please call the Redditch office on:

01527 540 654

Alternatively, you can scan below to view all of the details of this property online.



Please read the following: These particulars are for general guidance only and are based on information supplied and approved by the seller. Complete accuracy cannot be guaranteed and may be subject to errors and/or omissions. They do not constitute a contract or part of a contract in any way. We are not surveyors or conveyancing experts therefore we cannot and do not comment on the condition, issues relating to title or other legal issues that may affect this property. Interested parties should employ their own professionals to make enquiries before carrying out any transactional decisions. Photographs are provided for illustrative purposes only and the items shown in these are not necessarily included in the sale, unless specifically stated. The mention of any fixtures, fittings and/or appliances does not imply that they are in full efficient working order and they have not been tested. All dimensions are approximate. We are not liable for any loss arising from the use of these details.

373 Evesham Road
Redditch
Worcestershire
B97 5JA