

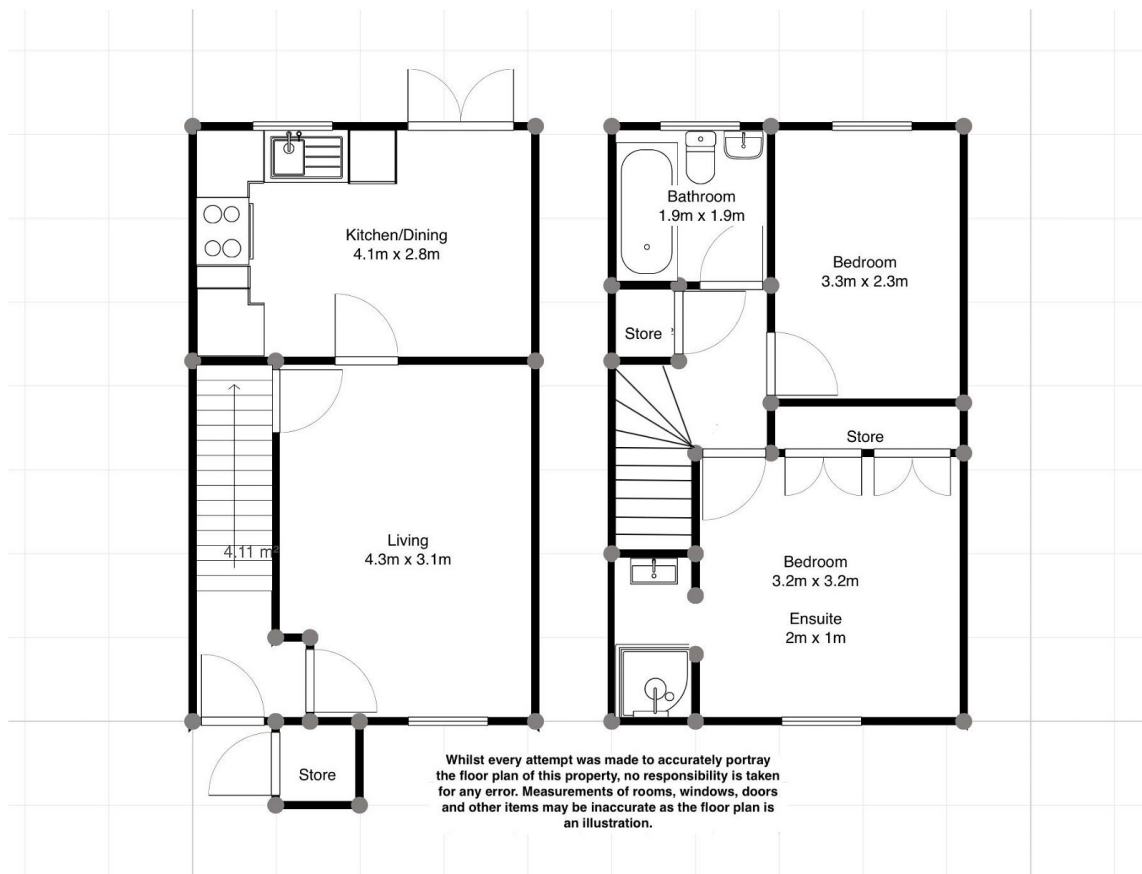
32 Herons Way

Offers Over £220,000

🛏 2 🚿 1 🚻 1



- QUOTE PROPERTY REF: LC0723
- SOUGHT AFTER AREA
- CAERPHILLY TOWN CENTRE WITHIN WALKING DISTANCE
- EXCELLENT TRANSPORT LINKS
- SOUTH FACING GARDEN
- 2 BEDROOM, SEMI-DETACHED HOUSE
- CLOSE TO LOCAL AMENITIES
- OFF ROAD PARKING FOR TWO CARS
- QUIET CUL-DE-SAC LOCATION
- IDEAL FOR FIRST TIME BUYERS OR INVESTMENT OPPORTUNITY



QUOTE PROPERTY REF: LC0723

Nicely presented two bedroom semi-detached house in the sought after location of Castle View, Caerphilly. Close to local amenities and with excellent transport links. Caerphilly town centre within walking distance. Ideal for first time buyers or as a rental opportunity. Must View! Click to read full details.