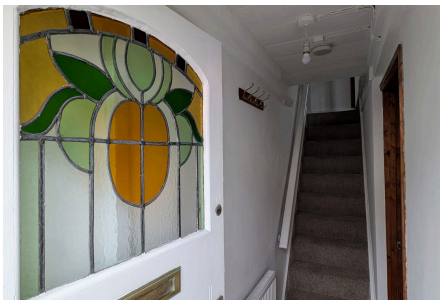




Chapel Street, St Just TR19

£209,500

🛏 2 🚿 1 🚗 1



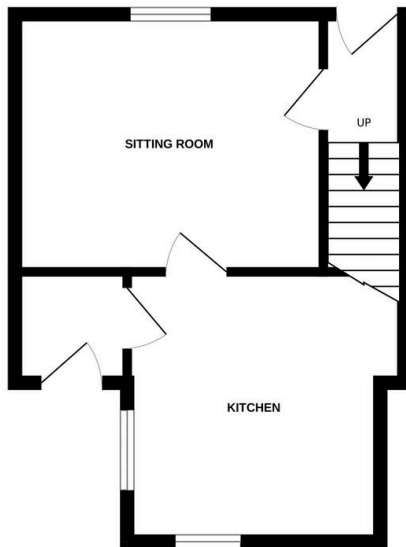
Within moments walk of St Just town centre is this well presented two bedroom cottage on popular Chapel Street. With an off street parking space and enclosed rear garden, this cottage is a rare find - and the living accommodation is well proportioned for a property at this price-point.



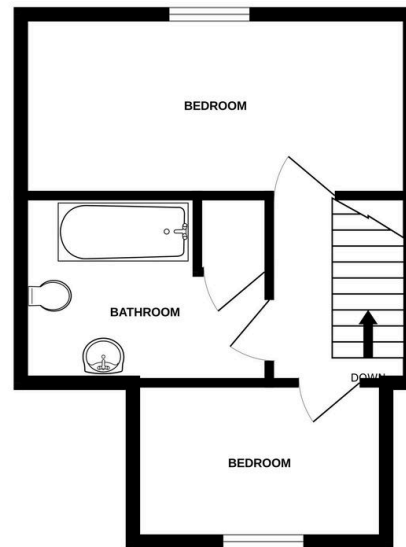
Key Features

- TWO BEDROOM COTTAGE
- OFF STREET PARKING SPACE
- ENCLOSED REAR GARDEN WITH SHED
- SHORT LEVEL WALK TO TOWN
- LIVING ROOM WITH OPEN FIREPLACE
- LPG CENTRAL HEATING
- READY TO MOVE IN/WELL PRESENTED
- GOOD SIZE KITCHEN AND BATHROOM
- EPC - E
- COUNCIL TAX BAND - A

GROUND FLOOR
310 sq.ft. (28.8 sq.m.) approx.



1ST FLOOR
310 sq.ft. (28.8 sq.m.) approx.



TOTAL FLOOR AREA: 619 sq.ft. (57.5 sq.m.) approx.

Whilst every attempt has been made to ensure the accuracy of the floorplan contained here, measurements of doors, windows, rooms and any other items are approximate and no responsibility is taken for any error, omission or mis-statement. This plan is for illustrative purposes only and should be used as such by any prospective purchaser. The services, systems and appliances shown have not been tested and no guarantee as to their operability or efficiency can be given.
Made with Metropix ©2024