



## Bosorne Road, St Just TR19

£185,000

🛏 2 🚗 1 🚲 1



On the way to Cot Valley from St Just, sits this surprising cottage with outside space, storage shed with power and plumbing and off street parking space. With two bedrooms and a shower room upstairs, and an entirely open plan space on the ground floor this property has lots of character features making it a thoroughly unique property.

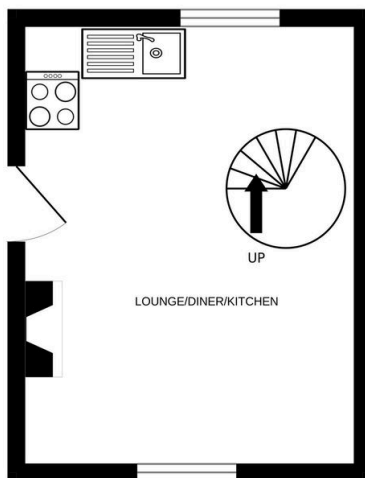
- TWO BEDROOM END OF TERRACE
- OFF STREET PARKING FOR ONE VEHICLE
- PRETTY COURTYARD GARDEN
- STORAGE SHED WITH POWER AND PLUMBING



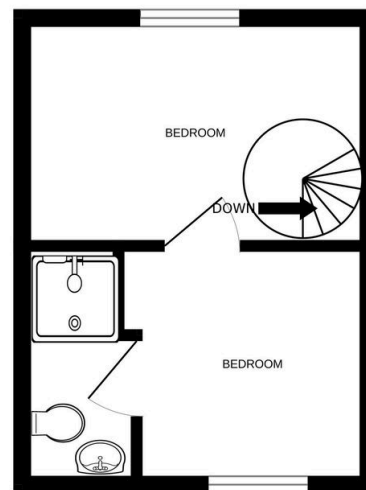
## Key Features

- TWO BEDROOM END OF TERRACE
- OFF STREET PARKING FOR ONE VEHICLE
- PRETTY COURTYARD GARDEN
- STORAGE SHED WITH POWER AND PLUMBING
- INGLENOOK FIREPLACE WITH MULTIFUEL STOVE
- CHARMING INTERIOR
- NO ONWARD CHAIN / CHAIN FREE
- EPC - TBC
- COUNCIL TAX BAND - A
- 

GROUND FLOOR



1ST FLOOR



Whilst every attempt has been made to ensure the accuracy of the floorplan contained here, measurements of doors, windows, rooms and any other items are approximate and no responsibility is taken for any error, omission or mis-statement. This plan is for illustrative purposes only and should be used as such by any prospective purchaser. The services, systems and appliances shown have not been tested and no guarantee as to their operability or efficiency can be given.  
Made with Metropix ©2024