



COUNTRY
HOLMES

10 Jubilee Close, Glossop

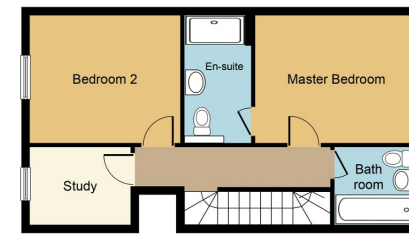
£320,000

3 2 1

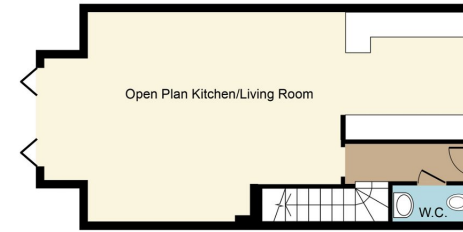


- Stunning Stone Built House
- Private and Prestigious Development
- Eight Local Primary Schools
- Four Secondary Schools Within Three Miles
- Magnificent Central Location
- Off Road Parking
- Driveway
- Detached Garage
- Immaculate Presentation
- Secure Rear Garden





First Floor



Ground Floor

Whilst every attempt has been made to ensure the accuracy of the floor plan contained here, measurements of doors, windows, rooms and any other items are approximate and no responsibility is taken for any error, omission, or mis-statement. The measurements should not be relied upon for valuation, transaction and/or funding purposes. This plan is for illustrative purposes only and should be used as such by any prospective purchaser or tenant. The services, systems and appliances shown have not been tested and no guarantee as to their operability or efficiency can be given.
Copyright V360 Ltd 2023 | www.houseviz.com



Glossop Brook is a Rydale Homes development set in the heart of Glossop Town Centre. With the convenience of sitting adjacent to amenities such as; Howard Town Mill retail park, restaurants, bars and cafes, local leisure centres, hotels and just a short stroll to the train station. Direct links to Manchester and Sheffield. The development sits in the Woods Mill Conservation area, which is underpinned by Glossop Brook passing directly through it and, combined with rolling hills rising from the brook into the Derbyshire distance and beyond, forms the idyllic backdrop to this beautiful spot. Simply an excellent location.

