



COUNTRY
HOLMES

53 Temple Street, Padfield

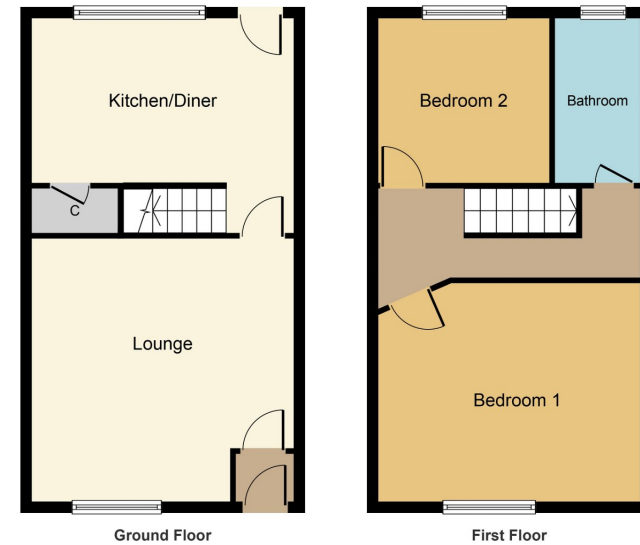
£245,000

🛏️ 2 🪑 1 🚗 2



- Stone Built Cottage
- Garden Fronted
- Totally Refurbished
- Immaculate Presentation
- New Kitchen Diner
- New Bathroom
- New Doors and Windows
- Far Reaching Views
- Council Tax B
- Leasehold 864 Years Remaining





Whilst every attempt has been made to ensure the accuracy of the floor plan contained here, measurements of doors, windows, rooms and any other items are approximate and no responsibility is taken for any error, omission, or mis-statement. The measurements should not be relied upon for valuation, transaction and/or funding purposes. This plan is for illustrative purposes only and should be used as such by any prospective purchaser or tenant. The services, systems and appliances shown have not been tested and no guarantee as to their operability or efficiency can be given.
Copyright V360 Ltd 2023 | www.houseviz.com



Country Holmes offers this impressive garden-fronted stone mid-terraced cottage, modernised by the current owner to a high standard. Close to the heart of the village, offers an open aspect to the front over the village green and pasture land to the rear. This well-presented two-bedroomed property is gas centrally heated and has new windows and doors throughout. With open views to the front over the village green and over adjoining farmland to the rear. There is ample parking to the front parking on a first come first serve basis. There is a local Green and play area and a primary school. A truly fabulous location with access to open countryside.

