



COUNTRY
HOLMES

Hawthorn Drive, Glossop, SK13 7EE

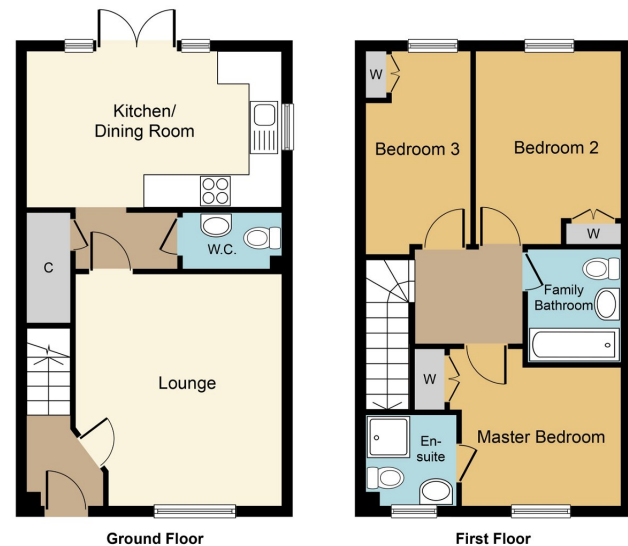
Offers Over £295,000

3 2 1

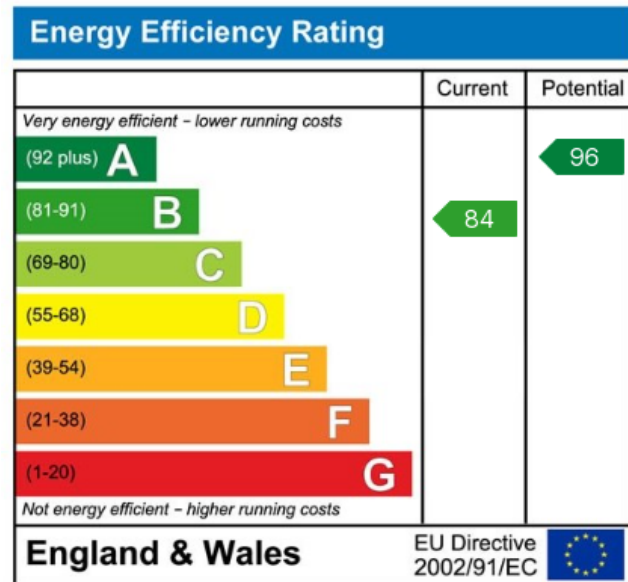


Country Holmes offers this superb three-bedroom semi-detached property built by Taylor Wimpy. The Gosforth provides light and airy accommodation and offers a good size Lounge, Kitchen, downstairs WC, two double bedrooms, master with En-suite and a single bedroom. The bathroom has a bath with shower over, sink and WC. The Kitchen has French doors leading out to the garden which the present owner has landscaped and planted and also benefits from a patio area and a further seating area to the rear of the garden next to a garden shed.





Whilst every attempt has been made to ensure the accuracy of the floor plan contained here, measurements of doors, windows, rooms and any other items are approximate and no responsibility is taken for any error, omission, or mis-statement. The measurements should not be relied upon for valuation, transaction and/or funding purposes. This plan is for illustrative purposes only and should be used as such by any prospective purchaser or tenant. The services, systems and appliances shown have not been tested and no guarantee as to their operability or efficiency can be given.
Copyright V360 Ltd 2023 | www.houseviz.com



01457 761310 | glossop@countryholmes.co.uk | www.countryholmes.co.uk
18 High Street West, Glossop, Derbyshire, SK13 8BH