

# COUNTRY HOLMES

Fields Crescent, Hollingworth, Hyde, SK14 8JR

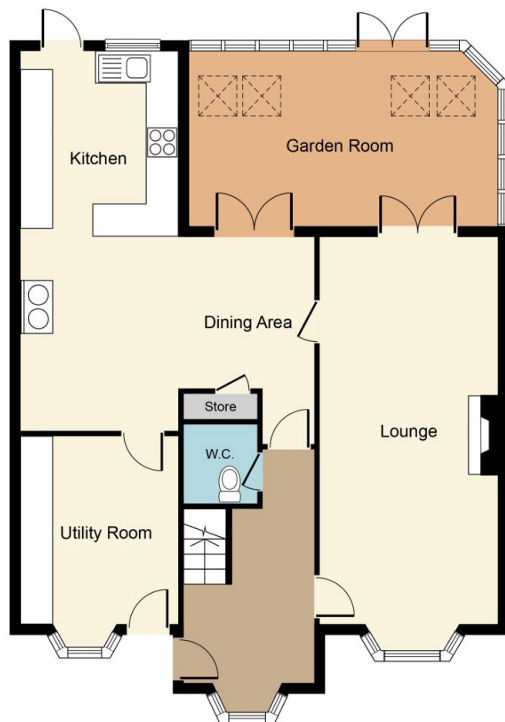
£300,000

🛏 5 🚿 3 🚗 2



# COUNTRY HOLMES

- Large Extended Family Home
- Five Bedrooms
- 1 Main Bathroom Plus Two En-suite
- Fabulous Garden Room
- Utility Room
- Gated Parking
- Lounge, Plus Dining Area
- Downstairs WC
- Breakfast Kitchen
- Rear Garden and Shed



**Ground Floor**



**First Floor**



Whilst every attempt has been made to ensure the accuracy of the floor plan contained here, measurements of doors, windows, rooms and any other items are approximate and no responsibility is taken for any error, omission, or mis-statement. The measurements should not be relied upon for valuation, transaction and/or funding purposes. This plan is for illustrative purposes only and should be used as such by any prospective purchaser or tenant. The services, systems and appliances shown have not been tested and no guarantee as to their operability or efficiency can be given.  
Copyright V360 Ltd 2023 | [www.houseviz.com](http://www.houseviz.com)

A beautifully extended home boasts five bedrooms, two with en-suite, a stunning kitchen/diner, three reception rooms, gated driveway parking and a good size private rear garden.