



CHRIS MACSWEENEY POWERED BY **exp** TM UK

@ [chris.macsweeney@exp.uk.com](mailto:chris.macsweeney@exp.uk.com)

[chrismacsweeney.exp.uk.com](http://chrismacsweeney.exp.uk.com)

☎ 07468 48 88 18



## Upperstone Close, Stotfold

£285,000

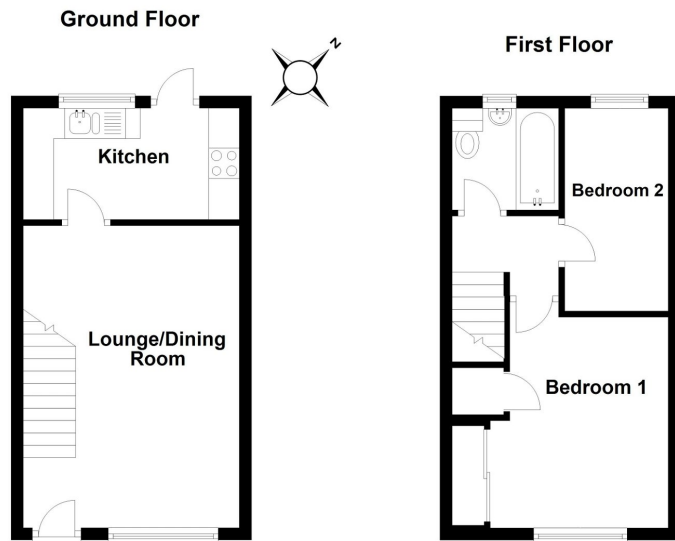
🛏 2 🚿 1 🚗 1

- Terrific First Time Buyer or Investment Purchase
- Replacement Kitchen and Bathroom
- Good Sized Lounge/Diner
- Allocated Off Road Parking
- Situated Close to Local Amenities and Facilities
- Excellent Condition Throughout
- Two Bedrooms
- Approx 45ft (13.72m) Rear Garden
- Popular Cul De Sac Location
- Quote Reference CM0245



**ATTENTION FIRST TIME BUYERS!!** This terrific terraced home is tucked away at the back of a popular cul de sac in the heart of Stotfold, within a short walk of local shops and amenities. In addition, Arlesey mainline station and the A1(m) are 5 minutes drive away. In great condition throughout, the property offers accommodation to include a 15'10ft (4.83m) lounge, refitted kitchen and bathroom, two bedrooms and a garden stretching to approximately 45ft (13.72m). Allocated parking is at the front. Viewing is essential! Quote CM0245.





Total area: approx. 48.9 sq. metres (526.6 sq. feet)



eXp World UK Ltd is a registered company at Level 37, 25 Canada Square, London, E14 5LQ.  
Registered company number is 12016573. VAT Registration Number is 327 4120 29