



DARYL HILL POWERED BY **exp** <sup>TM</sup> UK

@ daryl.hill@exp.uk.com

🌐 darylhill.exp.uk.com

☎ 07921 060 390



Birchmore Road, Gloucester, GL1 4DE

£180,000

🛏️ 2 🪑 1 🚗 2



- PERIOD MID TERRACE STARTER HOME
- 1/2 RECEPTION ROOMS
- LARGE KITCHEN/DINER TO REAR
- OFFERED FOR SALE WITH NO ONWARD CHAIN
- ON STREET PARKING
- 2/3 GENEROUS BEDROOMS
- FIRST FLOOR SPACIOUS BATHROOM
- LOW MAINTENANCE GARDEN
- IDEAL FOR ACCESS TO LOCAL AMENITIES INCLUDING CITY CENTRE AND HOSPITAL





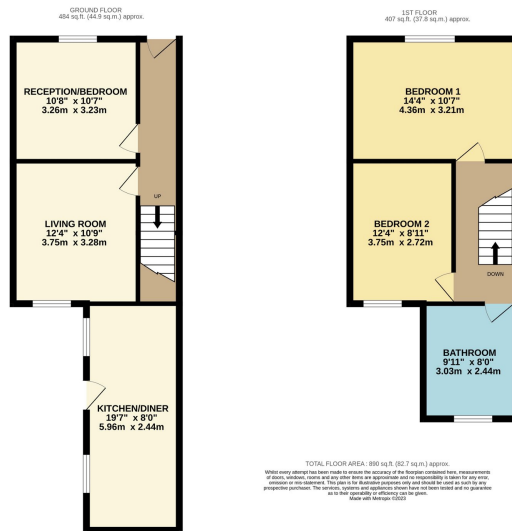
Welcome to this charming 2-bedroom Victorian terrace, nestled in the heart of Gloucester, this residence seamlessly combines period features with modern comforts, creating a warm and inviting home.

The home offers 2 double bedrooms and good sized bathroom on the first floor with 2 receptions (one currently used as a third bedroom) and a large kitchen/diner.

Outside the property has a low maintenance rear garden.

Conveniently located near local amenities, parks, schools, and public transportation, this Victorian terrace offers a lifestyle that seamlessly combines the elegance of the past with the convenience of the present. Offered for sale chain free.

ref DH010



Score	Energy rating	Current	Potential
92+	A		
81-91	B		86 B
69-80	C		
55-68	D	68 D	
39-54	E		
21-38	F		
1-20	G		