



## The Post House, Gloucester, GL4 3DX

Offers In Region Of £205,000

2 2

Welcome to this beautifully presented two-bedroom, two-bathroom apartment that exudes modern elegance and convenience. This exceptional first-floor residence is situated in the highly sought-after "Post House" development, making it an ideal choice for both first-time buyers and savvy investors. Having been fully redecorated by the current owner to exceptional, modern styling the apartment is complete with stunning open plan living and two parking spaces. REF DH0109

- FIRST FLOOR APARTMENT
- STYLISH APARTMENT COMPLEX
- 2 DOUBLE BEDROOMS
- 2 BATHROOMS
- 2 PARKING SPACES
- NEWLY REDECORATED THROUGHOUT



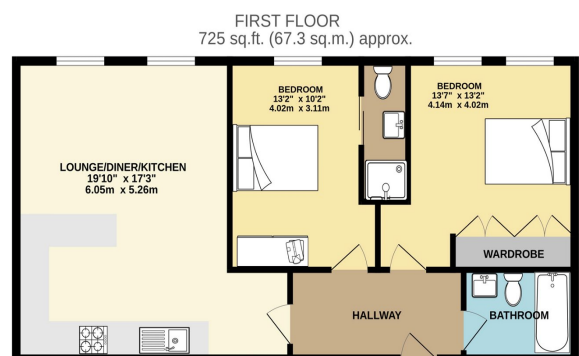
Floor Area: sq. ft.

Tenure: Leasehold

Service Charge: £1224 per annum

Ground Rent: £312 per annum

Score	Energy rating	Current	Potential
92+	A		
81-91	B		
69-80	C		
55-68	D	60 D	60 D
39-54	E		
21-38	F		
1-20	G		



TOTAL FLOOR AREA: 725 sq.ft. (67.3 sq.m.) approx.  
While every attempt has been made to ensure the accuracy of the floorplan contained herein, measurements of floors, windows, doors and other features are approximate and are not intended to be used for any legal or prospective purposes. The services, fixtures and appliances shown have not been tested and no guarantee is given in respect of their operation or efficiency over the years.  
Made with HdrMappe 02/23