

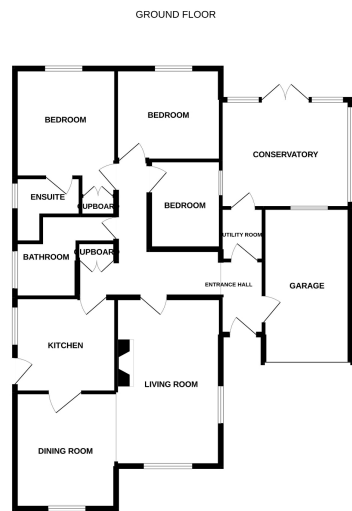


4 Downham Crescent

Offers Over £400,000

3 2 3





Where every effort has been made to ensure the accuracy of the information contained herein, Moneyproperties cannot accept any liability for any errors or omissions. The information is provided for general guidance purposes only. The accuracy of the information is not guaranteed. Moneyproperties cannot accept any liability for any errors or omissions.



Moneyproperties are thrilled to bring to market this spacious three bedroom detached bungalow occupying a generous plot on a quiet cul de sac in the popular market town of Wymondham. The bungalow comes to market with no forward chain and comprises of a 17 ft living room with a spacious open plan diner, kitchen, utility, three well-proportioned bedrooms with an ensuite to bedroom one, family bathroom, 11ft conservatory and integral garage. To the outside the property benefits from a 45ft rear garden with a summer house and storage shed. Further benefits include off-road parking for up to 3 cars.

Energy performance certificate (EPC)

Certificate contents

- Rules on letting this property
- Energy performance rating for this property
- Breakdown of property's energy performance
- Environmental impact of this property
- Improve this property's energy performance
- Estimated energy use and potential savings
- Contacting the assessor and accreditation scheme
- Other certificates for this property

4 Downham Crescent WYMONDHAM NR18 0SF		Energy rating D
Valid until 11 July 2032	Certificate number 9829-0063-7223-4312-0200	

Property type	Detached bungalow
Total floor area	97 square metres

Agents Note: Whilst every care has been taken to prepare these particulars, they are for guidance purposes only. All measurements are approximate are for general guidance purposes only and whilst every care has been taken to ensure their accuracy, they should not be relied upon and potential buyers/tenants are advised to recheck the measurements.

More information call us:

☎ 01953 423006