



01953 423006

moneyproperties.co.uk

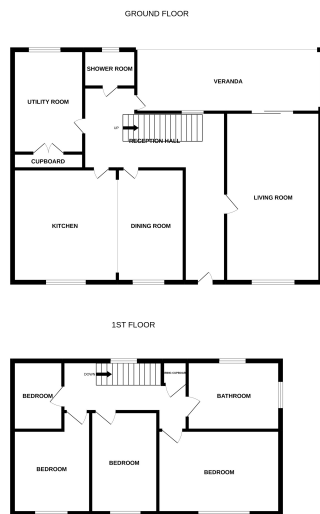
16 Market Street, Wymondham, NR18 0BB

Morley St. Botolph, Wymondham

Offers In Region Of £600,000

🛏️ 4 🚿 2 🚺 2





Whilst every attempt has been made to ensure the accuracy of the features contained here, measurements are approximate and are for general guidance purposes only. All measurements are approximate and are for general guidance purposes only. Whilst every care has been taken to ensure their accuracy, they should not be relied upon and potential buyers/tenants are advised to recheck the measurements.



MONEYPROPERTIES PROUDLY PRESENT THIS DETACHED FOUR BEDROOM HOUSE SITTING ON A GENEROUS PLOT APPROXIMATELY 0.30 ACRE WITH FIELD VIEWS TO THE FRONT AND REAR, CLOSE TO THE SOUGHT AFTER MORLEY PRIMARY AND WYMONDHAM COLLEGE. This detached four bedroom house offers approximately 1600 sq ft of living space and comprises of 19ft 5in Living room with patio doors leading onto veranda with views across the rear garden, 18ft kitchen / breakfast room with views across fields to the front, utility room and downstairs shower room with WC on the ground floor, four bedrooms and spacious family bathroom on the first floor with views across fields. Outside you have a 22ft garage parking for 7/8 cars, 20ft front garden and an impressive rear garden 120ft x 70ft and an additional 100ft x 25ft. The perfect home for those with a young family looking to benefit from the sought after local schools, those looking to live and enjoy Norfolk

Agents Note: Whilst every care has been taken to prepare these particulars, they are for guidance purposes only. All measurements are approximate and are for general guidance purposes only. Whilst every care has been taken to ensure their accuracy, they should not be relied upon and potential buyers/tenants are advised to recheck the measurements.

More information call us:

01953 423006