




52 Melton Road

£545,000

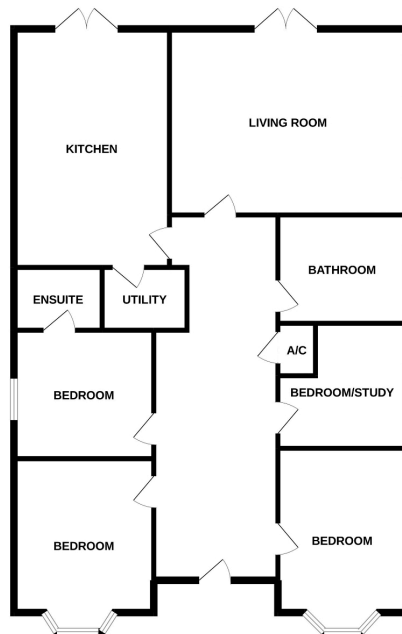
 4  2  1



- Detached four bedroom bungalow
- Approximately 1450 sq ft of living space
- Ample parking for 6 / 7 cars
- 18ft 10in Fully equipped Kitchen with vaulted ceiling
- Must view to fully appreciate
- Four double bedrooms / master with en suite
- Sitting on a plot approximately 145ft x 45ft
- Very well presented throughout
- Patio doors leading into the landscaped 55ft x 45ft rear garden with BBQ area
- No forward chain / quick sale possible



GROUND FLOOR



Whilst every attempt has been made to ensure the accuracy of the floorplan contained here, measurements of doors, windows, rooms and any other items are approximate and no responsibility is taken for any error, omission or mis-statement. This plan is for illustrative purposes only and should be used in conjunction with any prospective purchaser. The services, systems and appliances shown have not been tested and no guarantee as to their operability or efficiency can be given.
Made with Metreplex ©2022

NO FORWARD CHAIN QUICK SALE POSSIBLE FOR THIS IMMACULATE DETACHED 4 BEDROOM BUNGALOW SITTING ON A GENEROUS PLOT APPROXIMATELY 145FT X 45FT WITH AMPLE PARKING FOR 6 / 7 CARS. This detached 4 bedroom bungalow comes to market for the first time since been renovated to a high standard offering 4 double bedrooms master with en suite, superb wet room and a 18ft 10in kitchen / breakfast room with vaulted ceiling with patio doors leading into the rear secluded landscaped 55ft x 45ft garden. This is the ideal family home for the modern way of life with both the Kitchen / breakfast room and the living room leading into the rear garden which has its own 6 seater hot tub and barbeque area for those summer nights. The kitchen has a vaulted ceiling and is fully equipped with a integrated fridge, Stoves gas range,

water softener, and utility cupboard. This really is a must view property that will fit in well with modern living especially those with children.