



Garsett house, Princes Street

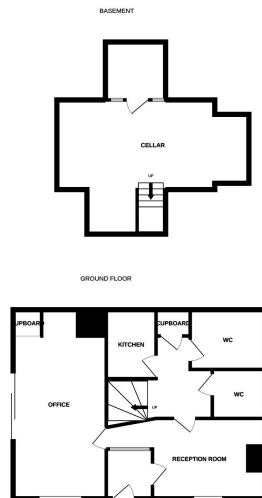
POA

🛏 0 🍳 0 🛋 0

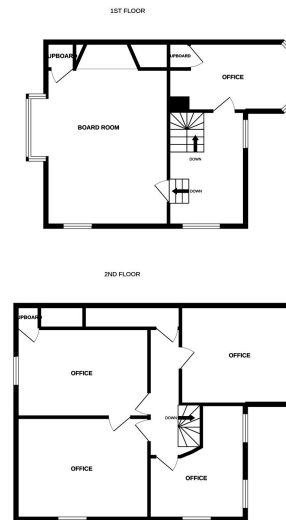


- Commercial property with potential to convert into residential (STP)
- Wealth of history and original features
- Versatile property which could home many business needs
- Previous uses include School, Doctors and Dentists surgeries, serviced office
- Spacious
- Grade 2 listed star City centre location
- Offering approximately 2000 sq ft
- Most recently used as main office for up to 20 employees
- Idyllic location next to St Andrew Church
- No forward chain / quick sale possible

Moneyproperties proudly presents "Garsett House" a Grade 2 listed star property in the heart of the city centre at the top of Princes Street and is the building that sits proudly opposite Saint Andrew Hall, with wonderful triple aspect views of this beautiful Norwich area. This versatile property steeped in history comes to market as a commercial property but could be converted to residential if required (subject to planning). Also known as Amanda House as it was believed to be partly built by the timbers of the sunken Spanish Armada. The story is emphasised by the date 1589 carved on the exterior, and a plaster relief carving of a 16th-century ship under sail on the Princes Street side of the building. Although there has been a property on the site since the 14th century the name 'Garsett House' presumably comes from its previous owner Robert Garsett in 1570.



Whilst every attempt has been made to ensure the accuracy of the floorplan contained here, measurements of doors, windows, rooms and any other items are approximate and no responsibility is taken for any error, omission or mis-statement. This plan is for illustrative purposes only and should be used as such by any prospective purchaser. The services, systems and appliances shown have not been tested and no guarantee



Whilst every attempt has been made to ensure the accuracy of the floorplan contained here, measurements of doors, windows, rooms and any other items are approximate and no responsibility is taken for any error, omission or mis-statement. This plan is for illustrative purposes only and should be used as such by any prospective purchaser. The services, systems and appliances shown have not been tested and no guarantee

Agents Note: Whilst every care has been taken to prepare these particulars, they are for guidance purposes only. All measurements are approximate are for general guidance purposes only and whilst every care has been taken to ensure their accuracy, they should not be relied upon and potential buyers/tenants are advised to recheck the measurements.

More information call us:

☎ 01953 423006