

Goldfinch Close, Wymondham, NR18

£200,000

2 2 1



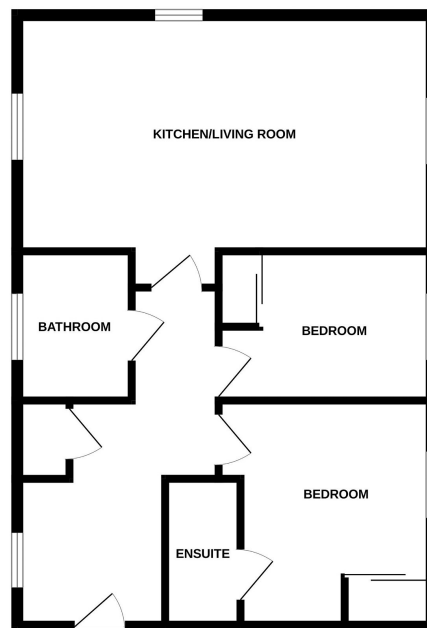
Moneyproperties are delighted to bring to market this immaculately presented two double bedroom first floor flat, bought from new in 2022 and located on a popular residential development within close proximity to Wymondham town centre and the local train station. The accommodation boasts stylish and modern interior throughout and comprises of an entrance hall, generous open plan kitchen/living room, two double bedrooms with an ensuite to bedroom one and a separate bathroom. Outside the property comes with 2 allocated parking spaces along with a space for visitor parking.

Tenure: Leasehold EPC: B Council Tax: B

Key Features

- Immaculately presented first floor flat
- Bought from new in 2022
- Stylish 20ft open plan kitchen/living room
- Two double bedrooms both with built in wardrobes
- Ensuite to bedroom one
- Allocated parking for x2 cars
- Additional visitors parking
- Located on a popular residential development
- Within close proximity to the town centre and local train station
- Council tax band B, EPC rating B, Leasehold Service charge & lease length please ask agent.

GROUND FLOOR



Whilst every attempt has been made to ensure the accuracy of the floorplan contained here, measurements of doors, windows, rooms and any other items are approximate and no responsibility is taken for any error, omission or mis-statement. This plan is for illustrative purposes only and should be used as such by any prospective purchaser. The services, systems and appliances shown have not been tested and no guarantee is given as to their operability or efficiency can be given.
Made with Metropac C2024