

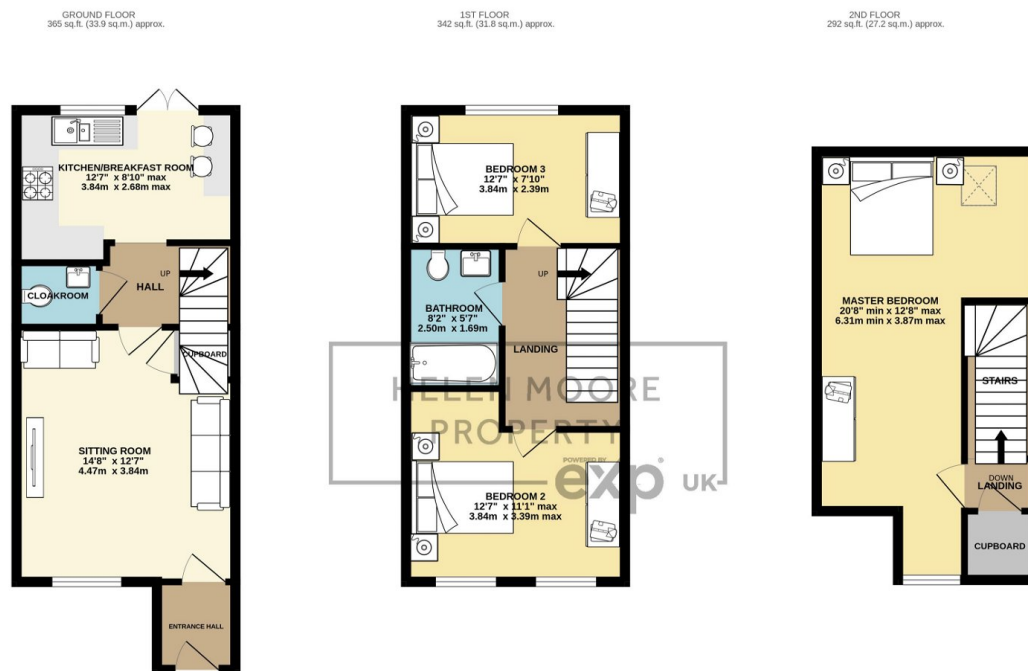
145 Bluebell Street,

Fixed Price £156,000

3 1 1



- Two Year Old End Terrace Home
- Immaculate Throughout
- Newly Fitted Kitchen/Breakfast Room
- Two Allocated Parking Spaces
- Cosy Lounge
- 60% Shared Ownership
- Three Double Bedrooms
- Far Reaching Views
- Family Bathroom & Cloakroom
- South Facing Garden with Decking and Lawn



TOTAL FLOOR AREA - 1000 sq.ft. (92.9 sq.m.) approx.
Whilst every attempt has been made to ensure the accuracy of the floorplan contained here, measurements of doors, windows, rooms and any other items are approximate and no responsibility is taken for any error, omission or mis-statement. This plan is for illustrative purposes only and should be used as such by any prospective purchaser. The services, systems and appliances shown have not been tested and no guarantee as to their operability or efficiency can be given.
Made with Metropix ©2024

Welcome to the charming two-year-old end terrace house available for shared ownership at 60%! This stunning property is spread over three spacious floors, offering ample space for comfortable living. The house features three generous double bedrooms, perfect for families or those looking for extra space for guests or a home office. In addition, there is a family bathroom and a ground-floor cloakroom. The property boasts a cosy lounge and a newly fitted kitchen/breakfast room with double doors out to the south-facing garden from where you can enjoy the far-reaching views. The property also comes with two allocated parking spaces. This charming

home is equipped with double glazing and gas central heating, providing comfort and energy efficiency all year round. What's more, it is available for a green mortgage deal, allowing you to make environmentally conscious choices and save on energy costs.