

Brownston Street, Modbury, South Hams

Offers In Region Of £465,000

🛏 2 🚿 2 🚗 1



With its timeless elegance and graceful charm, this period property invites you into a world of classic beauty and modern comforts. Spanning over four floors, this meticulously maintained home promises a luxurious and comfortable living experience. A seamless blend of traditional character and contemporary style.

Key Features

- Period Link Detached Home
- Arranged Over Four Floors
- Immaculate Throughout
- Far Reaching Countryside Views
- Town Centre Location
- Two Bedrooms and Mezzanine
- Significant Renovations
- Enclosed Landscaped Garden
- Parking & Garage
- Traditional Character and Contemporary Style

Hatt House, Brownston Street, Modbury, PL21 0RQ

Approximate Gross Internal Floor Area = 158.8 sq m / 1709 sq ft
 Garage Area = 13.0 sq m / 140 sq ft
 Total Area = 171.8 sq m / 1850 sq ft

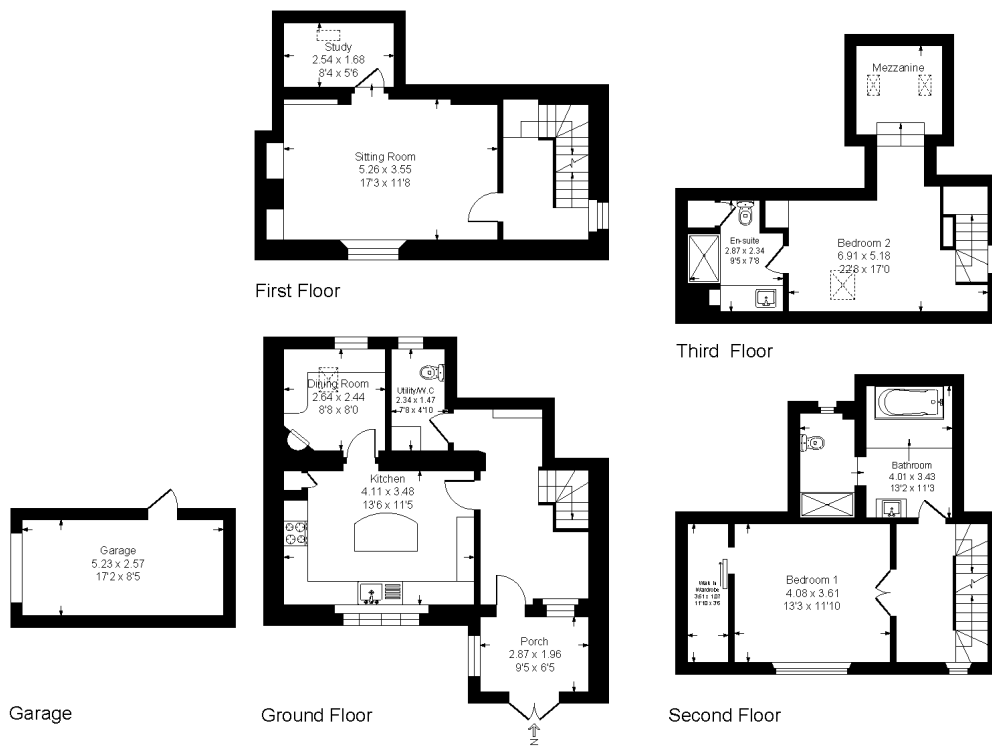


Illustration for identification purposes only, measurements are approximate, not to scale.