

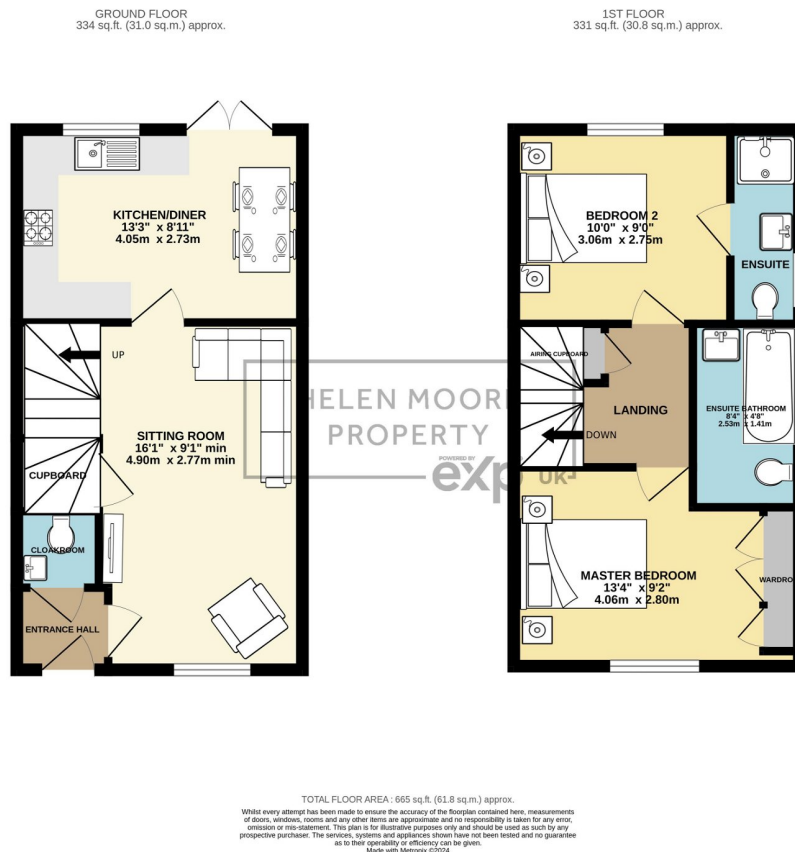
Lysander Lane, Derriford, Plymouth

Offers In Region Of £225,000

2 2 1



- Modern Terraced Home
- Two Ensuites
- Lounge
- Allocated Parking
- Enclosed Low Maintenance Garden
- Two Double Bedrooms
- Cloakroom
- Fitted Kitchen with Dining Space
- Near the Hospital and Main Routes
- Available from approx July 2024



Welcome to this stunning terraced house that offers a comfortable and modern living experience. With two double bedrooms, this property provides ample space for relaxation and privacy. The main bedroom boasts a beautifully designed ensuite bathroom, while the second bedroom benefits from an ensuite shower room. Step into the welcoming atmosphere of the ground floor, where you will find a cosy lounge perfect for unwinding after a long day. The modern kitchen and dining area, complete with built-in appliances and double doors leading out to the garden. The enclosed garden, with a rear access gate, offers a private outdoor space to

enjoy the fresh air and sunshine. This well-presented home features double-glazed windows and doors and gas central heating. Located near Derriford Hospital, this property is perfect for medical professionals seeking a convenient commute. With good access to all main routes, you'll have no trouble exploring the surrounding area and beyond.