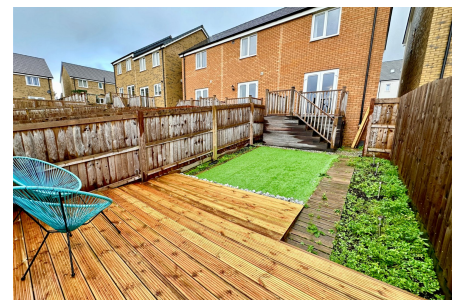


## Bluebell Street, Derriford, Plymouth

Guide Price £210,000

🛏️ 2 🚿 1 🚗 1

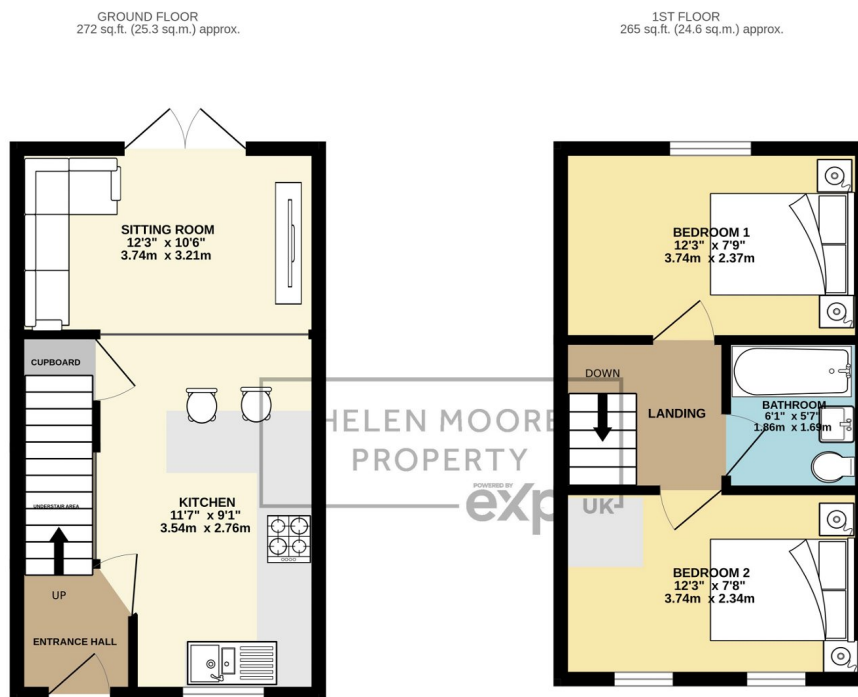


Introducing a charming end terrace modern house that offers the perfect combination of comfort, style, and convenience. Boasting two double bedrooms and modern bathroom, this property is ideal for individuals, couples, or small families seeking a cosy and inviting space to call home. Enjoy the captivating open views towards the Forder Valley, allowing you to immerse yourself in the beauty of nature. The enclosed garden provides a safe sanctuary, a perfect spot for outdoor gatherings or simply enjoying some fresh air. Additionally, a parking space at the front ensures your vehicle is always secure and easily accessible. The fitted kitchen with a breakfast bar seamlessly connects to the sitting room through open-plan design, double doors

open to the garden, inviting natural light and creating a seamless indoor-outdoor flow. This property presents an exceptional opportunity with no onward chain.

## Key Features

- End Terrace Modern House
- No Onward Chain
- Great Location for Access to A38 & Derriford Hospital
- Open Plan Living Space & Kitchen
- Modern Bathroom & Cloakroom
- Two Double Bedrooms
- Open Views towards Forder Valley
- Parking Space & Enclosed Garden
- D/Glazing & Gas C/Heating
- Perfect Starter Home Or Investment



TOTAL FLOOR AREA: 537 sq.ft. (49.9 sq.m.) approx.

Whilst every attempt has been made to ensure the accuracy of the floorplan contained here, measurements of doors, windows, rooms and any other items are approximate and no responsibility is taken for any error, omission or mis-statement. This plan is for illustrative purposes only and should be used as such by any prospective purchaser. The services, systems and appliances shown have not been tested and no guarantee as to their operability or efficiency can be given.  
Made with Metropix ©2024