

## Park Street, Ivybridge, Devon

Offers In Region Of £245,000

2 1 1



- Period Terraced Cottage
- Character & Charm
- Lounge with Woodburner
- Utility Room & Cloakroom
- Central Town Location
- Two Double Bedrooms
- Pretty Garden
- Gorgeous Kitchen/Diner
- Conservatory
- Gas C/Heating & Double Glazing

25 Park Street, Ivybridge, PL21 9DW

Approximate Gross Internal Floor Area = 78.1 sq m / 841 sq ft  
 Outbuilding Area = 8.8 sq m / 95 sq ft  
 Total Area = 86.9 sq m / 936 sq ft

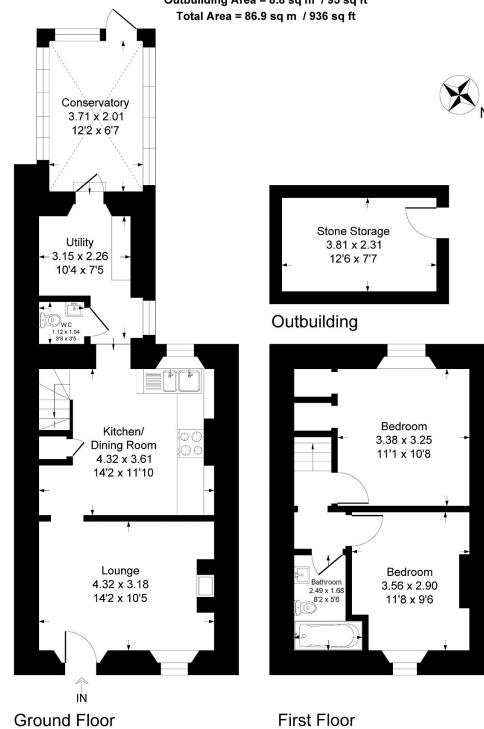


Illustration for identification purposes only, measurements are approximate, not to scale.

This stunning property is brimming with character and boasts a range of desirable features that make it a true gem. Step inside and be greeted by the cosy lounge, complete with a wood burner that creates a warm and inviting atmosphere. The beautiful kitchen/diner is perfect for hosting family and friends, with ample space for entertaining and enjoying delicious meals. Additional highlights include a convenient utility room and the downstairs WC, providing practicality and functionality, and the conservatory that is currently used as an office. Upstairs, you will find two spacious double bedrooms that offer comfort and tranquility. The white bathroom offers

functional space for you and your family. Outside, a pretty rear garden awaits, providing a great space to relax and unwind. Located in the heart of the town, this property offers easy access to a range of amenities and attractions.