

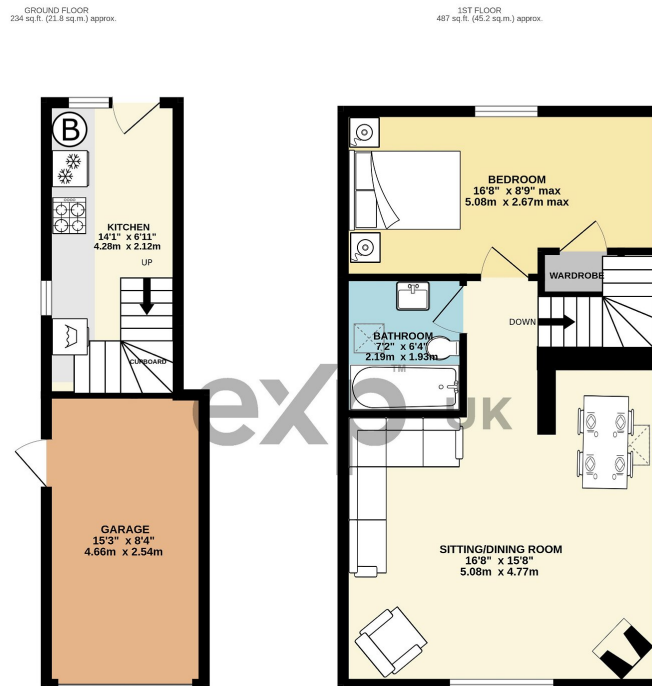
## Modbury, South Hams

Guide Price £265,000

1 1 1



- Detached Barn Conversion
- Woodburner
- Garage
- Courtyard Garden
- Stunning Lounge/Diner
- One Double Bedroom
- Beautifully Presented
- Central Town Location
- Modern Kitchen
- Countryside Views to the Front



TOTAL FLOOR AREA: 721 sq ft. (67.0 sq m.) approx.  
Whilst every attempt has been made to ensure the accuracy of the floorplans contained herein, measurements of doors, windows, cornices and any other items are approximate and no responsibility is taken for any errors, omissions or mis-statements. This plan is for illustrative purposes only and should be used as such by any prospective purchaser. The services, options and appliances shown have not been listed and no guarantee as to their operability or efficiency can be given.  
Made with MyHomeplan ©2022

Escape to your private haven in this exquisite detached barn conversion. Step into the updated kitchen from the private courtyard garden with stairs ascending to the first floor. The inviting lounge/diner, where you can enjoy a meal or relax with a good book and enjoy the countryside views. The property has a garage, providing convenient storage or parking space. The double bedroom is beautifully decorated and benefits from the built-in wardrobe, adjacent is the immaculate bathroom.

Located in the heart of a bustling town, you'll find yourself within a short distance of all the necessary amenities. Lovely and chic, this barn conversion is perfect for those seeking a unique and charming home. Experience the perfect blend of tranquility and convenience, making this gorgeous property a truly captivating place to call your own.