



MELANIE LEWIS

exp<sup>®</sup> UK

@melanie.lewis@exp.uk.com

melanielewis.exp.uk.com

07846 64 64 58



Lichen Road, Frome, BA11 5DZ

£300,000

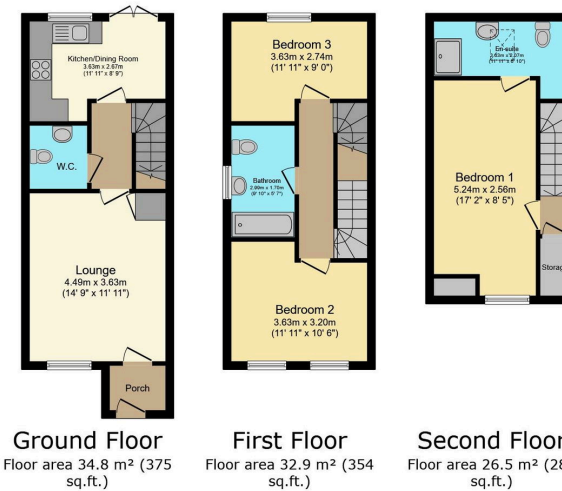
3 2 1





- Please quote ref MJ0484 to book your personal tour
- 3 double bedrooms
- Ensuite to principle bedroom
- Freehold
- Shower over bath in family bathroom
- Garage and parking
- Secure South East facing low maintenance garden
- Popular location
- Good amenities nearby
- Ready to move into with NO stamp duty for First Time Buyers





TOTAL: 94.3 m<sup>2</sup> (1,015 sq.ft.)

This floor plan is for illustrative purposes only. It is not drawn to scale. Any measurements, floor areas (including any total floor area), openings and orientations are approximate. No details are guaranteed, they cannot be relied upon for any purpose and do not form any part of any agreement. No liability is taken for any error, omission or misstatement. A party must rely upon its own inspection(s). Powered by www.propertybox.io

Please quote ref MJ0484 to book your personal tour.

If you are looking for a gorgeous home to get you on the property ladder then don't hang around and book a viewing of this lovely townhouse as soon as possible. With a generous lounge, kitchen/diner, spacious bedrooms, family bathroom and principal bedroom suite that stretches across the whole of the top floor, this lovely home is ready for you to move straight into. Just add furniture. Outside you've got a southeast facing garden with raised decking and patio area and to top off this lovely home there is a detached garage and parking space. If this is your first purchase don't forget you pay NO STAMP DUTY

Score	Energy rating	Current	Potential
92+	A		95 A
81-91	B	84 B	
69-80	C		
55-68	D		
39-54	E		
21-38	F		
1-20	G		

The graph shows this property's current and potential energy rating.