



MELANIE LEWIS

exp<sup>®</sup> UK

@melanie.lewis@exp.uk.com

melanielewis.exp.uk.com

07846 64 64 58



Lichen Road, Frome, BA11 5DZ

£540,000

🛏 5 🍷 2 🛋 2

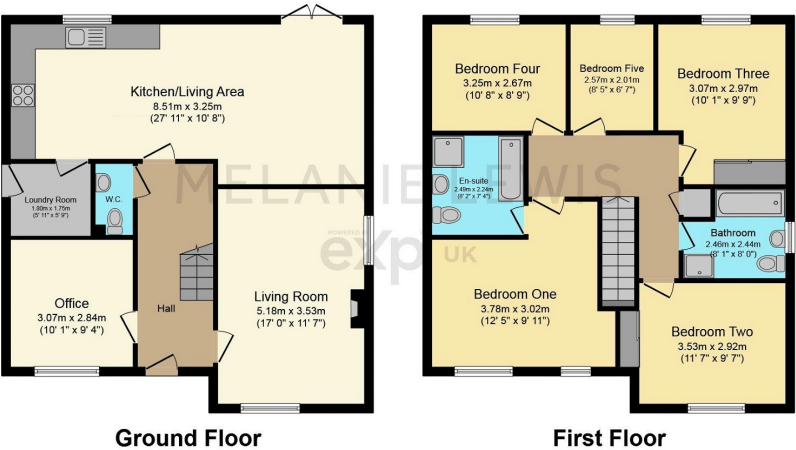


- Freehold
- 3 further double bedrooms and 1 single bedroom
- Utility room
- Detached double garage
- Close to local amenities
- Spacious master bedroom with ensuite bathroom
- 27 foot kitchen/living area
- Second reception - ideal home office or playroom
- Sunny, south west facing garden
- Countryside views





If you are looking for a spacious family home with room for an office or playroom then this gorgeous 5 bed home on the popular Edmund Park development on the eastern side of Frome is ready to move into and could be just what you want. With plenty of space for a growing or a grown family, as well as a perfect layout for cooking, entertaining and homeworking, this impeccably presented house is not to be missed. Please quote MJ0484 - Lichen Road to book your viewing



Total floor area 146.7 m<sup>2</sup> (1,579 sq.ft.) approx  
This plan is for illustration purposes only and may not be representative of the property. Plan not to scale. Powered by PropertyBox

Score	Energy rating	Current	Potential
92+	A		93 A
81-91	B	86 B	
69-80	C		
55-68	D		
39-54	E		
21-38	F		
1-20	G		

The graph shows this property’s current and potential energy rating.