





# QUEENS CRESCENT, Amblecote, Stourbridge, DY8 4JF

Guide Price £225,000

3 1 2

- FOR SALE VIA A MODERN METHOD OF AUCTION
- Having no upward chain.
- A spacious three bedroom semi detached family home.
- Popular cul-de-sac setting, close to local amenities.
- Porch, Entrance Hall, Living Room, Dining Room, Kitchen.
- Three Bedrooms, Family Bathroom, spacious Garage, Rear Garden.
- Requiring a scheme of updating, offering plenty of potential throughout.
- An early viewing is advised.
- EPC Rating TBC.

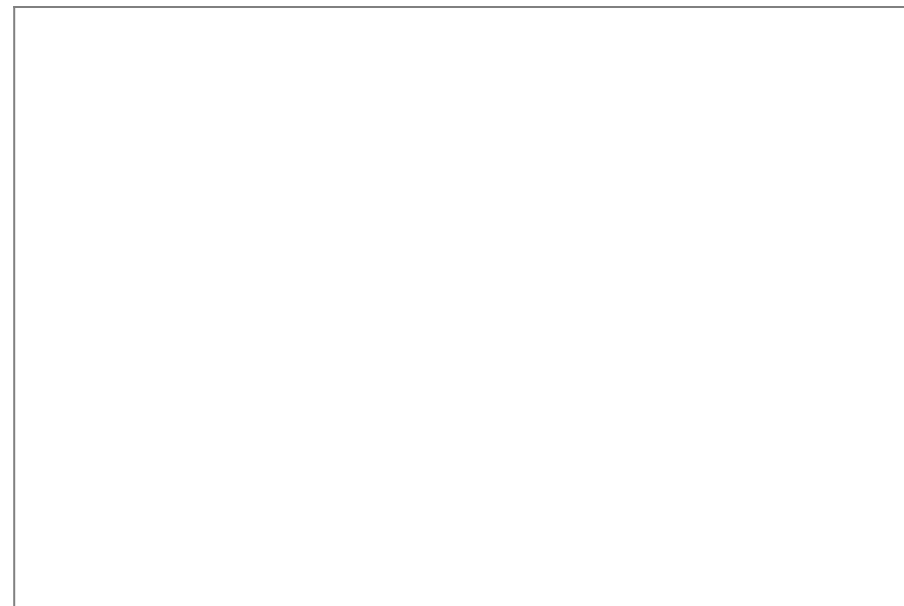
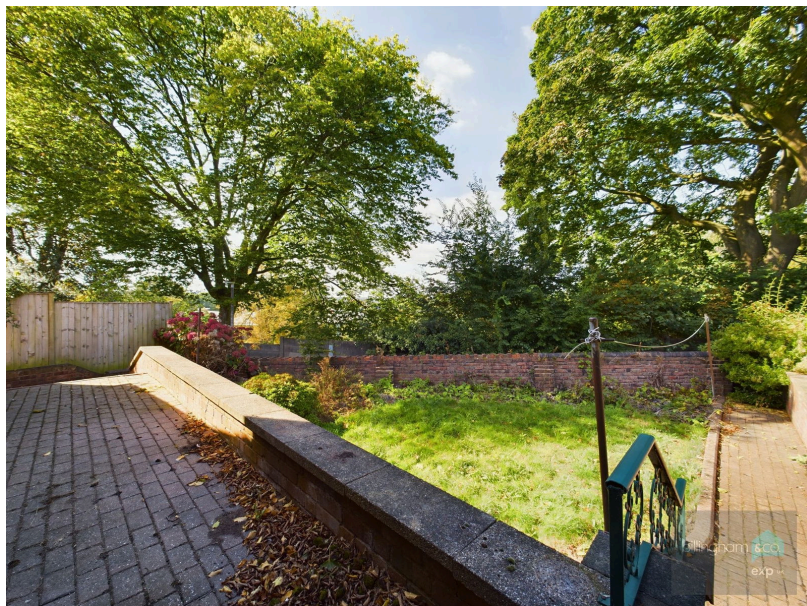
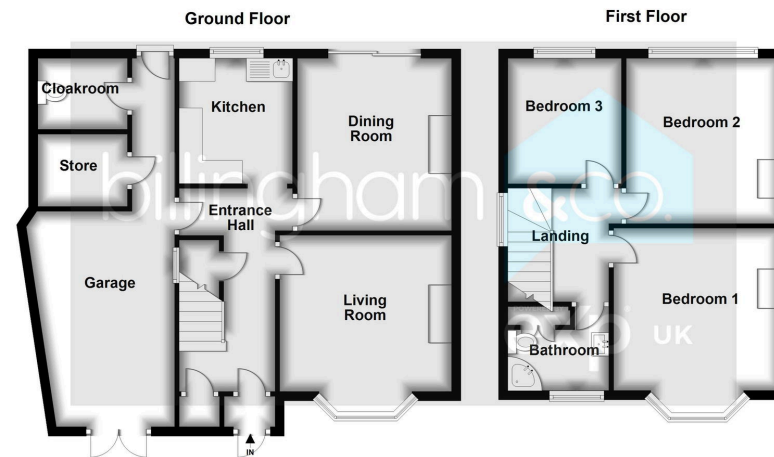


A SPACIOUS THREE BEDROOM SEMI DETACHED FAMILY HOME - FOR SALE VIA A MODERN METHOD OF AUCTION, requiring a scheme of updating, yet offering spacious living accommodation. Occupying a prime cul-de-sac setting on the outskirts of Stourbridge, close to local amenities. Having a LIVING ROOM, DINING ROOM, KITCHEN, GOOD SIZED GARAGE, THREE BEDROOMS, BATHROOM, REAR GARDEN. Having NO UPWARD CHAIN, an early viewing is advised!









Sales 01384 444 004 / Lettings 01384 445 075  
 hello@billingham.properties  
 www.billingham.properties



Agents Note: Whilst every care has been taken to prepare these particulars, they are for guidance purposes only. All measurements are approximate and are for general guidance purposes only and whilst every care has been taken to ensure their accuracy, they should not be relied upon and potential buyers are advised to recheck the measurements.